

Williams County Fair



Sept. 10 - 15, 2022



Pence's
CONCESSIONS

**WELCOME
TO THE
COUNTY FAIR!**

First with the finest since the 1900's



The WILLIAMS COUNTY FAIR

September 10th to the 15th, 2022
619 East Main Street • Montpelier, OH 43543
Fair Office 419-485-3755
Ticket Office 419-485-4456
Fax 419-485-1324
Website - www.wcofair.com
Email - office@wcofair.com

Daily Fair Gates

Saturday - Thursday (9/10 to 9/15) open 9am

Admission Prices

Daily Adult Admission \$5.00
Children age 12 and under FREE
Adult Season Pass \$20.00
Student Season Pass \$10.00
Ag. Society Membership \$1.00



Edon Area Livestock Boosters

Thanks to our 2021 Auction Supporters

AA Brown
A2Z Design – Certa Pro Painters
Best Insurance & Financial Services
Edon Dairy Treat
Edon FFA Alumni
Edon Lodge 474
MDG Associates
Thiel Construction
Wellness Huddle – Michael Miller
Blakeslee Knights of Columbus
Psi Iota Xi Sorority
Jeff & Cathy Frastaci
Jo Ann Luce
Mark & Tina Trausch

**Good Luck to all the 4H & FFA Exhibitors at the 2022 Williams
County Fair!**

**Call Bert Brown 419-212-0851 or Joe Radabaugh 419-553-4471 to
make a donation in 2022!**

Message from the President—Pam Goll

To the Residents and Guests of the Williams County Fair,

I would like to take this opportunity on behalf of the Williams County Fair Board to Welcome you to the 2022 Williams County Fair.

We have weathered the storm of the worldwide pandemic the past 2 years while continuing to provide a modified fair for the youth exhibitors in 2020 and in 2021 we gathered together as a county to regroup and put on a full fair. 2022 brings about some changes with us revamping the fair into a 6 day fair. With this change you will see some modifications to the schedule for the fair, while continuing to provide the traditions of past fairs.

Our Team of Senior Fair Board Directors and Auxiliary Directors have been working hard to provide a wonderful fair. Change is always hard but you will continue to see the Demo Derby, Truck Pulls, Band Show, Cheer Off, Harness racing and returning this year the Rodeo in front of the Grandstand. There will be a free stage again this year with entertainment daily for all to enjoy. The Crowning of the Fair Royalty will be on the Free stage. The Junior Fair schedule will continue with Livestock shows as they have in the past with a few times changes to accommodate the youth to be able to showcase their hard work with their animals. Ending with the Livestock on Thursday morning. Don't forget to stop by the 4-H Building and Gillette building to see the displays of still projects from the 4-H members, FFA members and Scouting organizations admire their talents.

This year has seen an increase in rentals and events on the Fairgrounds in the off season. It has been wonderful to see all the activity on the fairgrounds. We have repaired water lines, updated lighting and electrical at the grandstand, installed new heating and air conditioning in the Gillette Building. We have renovated the inside of the 4-H building with the generous support and donations from organizations, businesses and individuals of the county, The support for this project was truly a show of what the people of Williams County are all about.

Our Junior Fair Board is a hard working group of young people who spend countless hours preparing livestock buildings, and the grounds for the fair. When you see them at the fair, you will see them helping to put on Livestock shows and assisting where needed. Their support is greatly appreciated, thank them. We want to thank all of the Volunteers, Sponsors, Merchants and Concessionaires that help us put on the fair. Make sure to stop by the Midway, Concession stands, and the Commodity Booths for your favorite ride or treat that is a Williams County Fair Tradition. Checkout the schedules in the fair book so you don't miss an event.

We look forward to seeing you all at the 2022 Williams County Fair.

In Service & Friendship,

Pam Goll

Senior Fair Board President

2022 Senior Fair Board



Row 1: Stacey Perry (Auxiliary Director), Summer Owens (Board Secretary), Pam Goll (Board President), Danyel Wortkoetter (Director), Loretta Burkhart (Auxiliary Director),
Row 2: Matt Kennedy (Director), Sam Farmer (Director), Alex Baker (Board Vice President), Jason Fry (Director), Tobi Fenicle (Director), Tom Fry (Director)
Row 3: Chad Carroll (Auxiliary Director), Scott Carroll (Director), Dave Page (Director), Tim Belding (Director), Joe Wineberner (Director)

2022 Junior Fair Board



Row 1: Raiden Rezabek, Brooke St. John, Hayleigh Laney, Olivia Saul, Cassidy James, Ava Herman, Alyssa McDougle, MacKenzie Spangler, Carolyn Herman.

Row 2: Gracie Hardin, Kenzie Weber, Alivya Fry, Kendall Sheline, Katie Dorsten, Grace Herman, Angela Stantz, Heavenlee Owens, Mackenzie Frame, Reese Hand, Courtney Cooley, Mia Herman

Row 3: Sky Osborn, Johnathan Dorsten, Makayla Keppeler, Nathan Herman, Makinzy King, Tyler James, Jacob Steffes, Autumn Owens

Not Pictured: Abby Fry, Maddie Herman, Caden Hand, Kinsley Martin, Kirian Mercer, Grace Reitzel, Alex Richmond, Connor Towers, Gage Wineberner



THE OHIO STATE UNIVERSITY

COLLEGE OF FOOD, AGRICULTURAL, AND ENVIRONMENTAL SCIENCES

Jeff Dick

Extension Educator
4-H Youth Development
OSU Extension Williams County

Stephanie Karhoff

Extension Educator
Agriculture and Natural Resources
OSU Extension Williams County

SPECIAL THANKS

Williams County Pork Producers
Williams County Beef Producers
Williams County Dairy Association
Williams County Horseman Association
Williams County Jr. Fair Board Parents
Williams County Jr. Fair Board Members
Williams County Sr. Fair Board Spouses
Williams County Commissioners
Williams County OSU Extension Office
Williams County 4H Advisors
Williams County 4H Students
Williams County FFA Groups
Williams County 4H Advisory Council
Brewer's Sound
Kenn-Feld Group LLC - Edgerton OH
Rick Kilgore - Bloomin' Onion
Jeanne Shankster - Remax Preferred
A.R.S.
Edgerton Forge Inc.
Shultz Huber & Assoc.
Fisk French Fries
Hillsdale Daily News powered by Local IQ
Poor Jacks Amusements
Pence's

*Heartfelt thanks to the sponsors,
donors and supporters of the Wil-
liams County Fair. You're the key
to our success for the 4H/FFA
Youth of this county!*

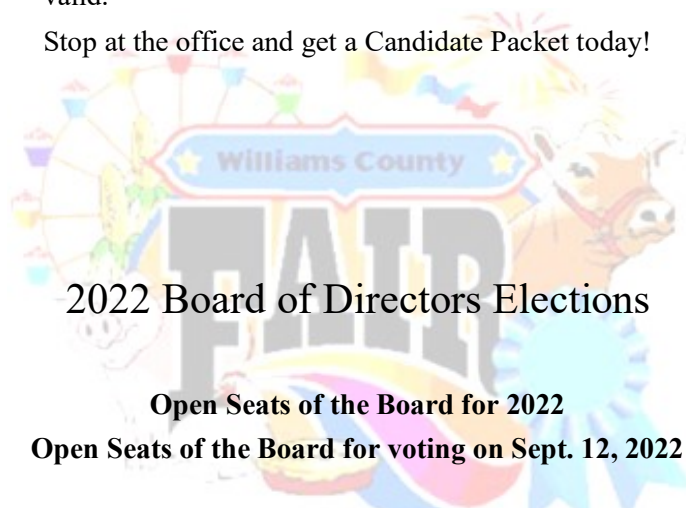


BECOMING A CANDIDATE

- Be a citizen of Williams County
- Be a member of the Ag. Society (\$1.00 fee)
- Complete a BCI background check
- Pull & file a petition for an open seat with 10 Ag Society member signatures

ALL petitions must be filed with the Secretary no later than 6PM on August 18, 2022 to be considered valid.

Stop at the office and get a Candidate Packet today!



For a full 3 year term expiring in 2025

Seat	Incumbent
District 1	Joe Wineberner
Bryan	Danyel Wortkoetter
Stryker	Sam Farmer
Member @ Large 1	Alex Baker
Superior Township	Open
Center Township	Open
Edon	Open
Pioneer	Open

For a 2 year term expiring in 2024

Seat	Incumbent
Madison Township	Open
St. Joseph Township	Open
Florence Township	Open

For a 1 year term expiring in 2023

Seat	Incumbent
Jefferson Township	Open
Pulaski Township	Open
District 2	Open
Montpelier	Open
Member @ Large 2	Open
Member @ Large 3	Open

Be sure to stop an Auxiliary Director and thank them!

Serving both at the fair, the board room and working with the Directors, these talented friends had a passion to test the water for joining through the Auxiliary. We are fortunate to have such amazing and passionate people here in Williams County!

Loretta Burkhardt, Chad Carroll, Stacey Perry

GET INVOLVED
Make a Difference!





**257 East Morrison
Edgerton, Ohio 43517
(419) 298-2333**



NOTICE

**WE ARE NOT
RESPONSIBLE
FOR THEFT OR
DAMAGE TO
VEHICLES OR
CONTENTS**

PARK AT YOUR OWN RISK

Williams County Fair Board Policies

The Williams County Agricultural Society has adopted the following Policies for the betterment of the fair and the organization as a whole. Copies are available at the Fair Office for the public. Thank you.

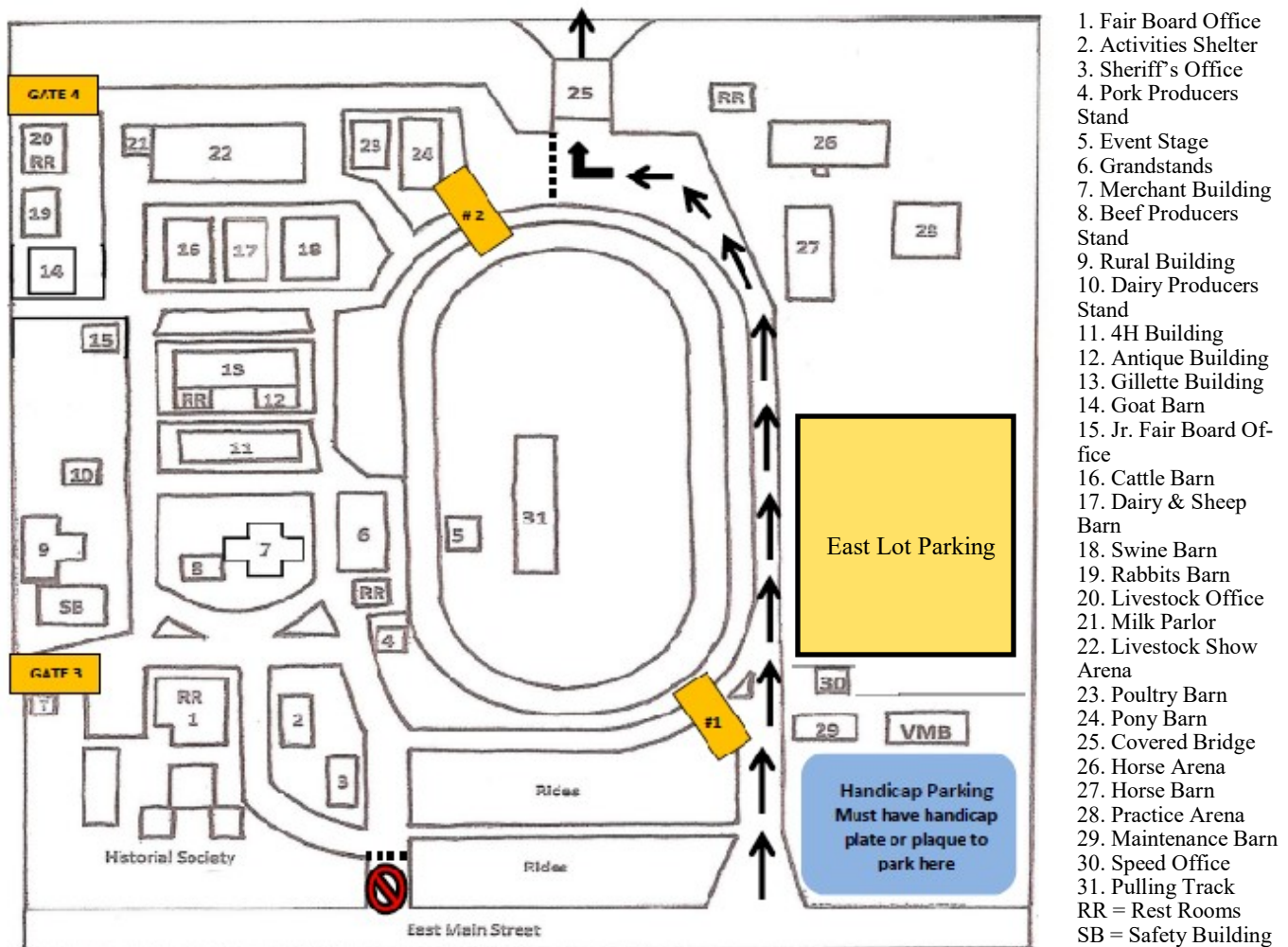
- Code of Conduct
- Code of Ethics
- Conflict of Interest
- Background Checks
- Record Retention
- Whistle Blower
- Alcohol
- Open Records Request
- Equipment Operations
- Auxiliary Directors
- And other minor operational policies.



**PROUD MEMBERS OF
THE OHIO FAIR
MANAGERS ASSOCIATION**

2022 Master Fairgrounds Map

General Parking North of the Bridge - All traffic must exit to County Road M. - No southbound traffic on the bridge
Parking available on east lot on a first come first server basis.



LIVESTOCK MOVE-IN DAY FRIDAY SEPT. 9th, 2022

Animals **MUST** be weighed in upon arrival to the fairgrounds.

Beef/Sheep/Goats - weighed at the show pavilion.

Swine - weighed at the swine barn (unload in the wash rack)

Poultry/Rabbits - weighed in at the poultry and rabbit barn.

DUNF Forms must be completed online prior to arrival or at time of arrival.

Show Numbers

All livestock exhibitors need to stop by the Jr. Fair Board Office to pick up their show numbers once they have checked in their animal (s) into the barns. They will have until close of business on the first Saturday of the fair to pick-up their show numbers. Business hours will be posted in the Jr. Fair Office and shared ahead of time for exhibitors.

SATURDAY SEPTEMBER 10th

OPENING DAY & Veterans Day

Junior Fair Schedule

- 9:00 am Goat Show @ the Show Pavilion
 10:00 am FFA Crop Projects to be in place at the Gillette Building
 1:00 pm Poultry Show @ the Show Pavilion

Williams County Fair Ticket Office
Opens at 9am
Selling Reserved Seating Grandstand Tickets for;
Demo Derby
 Don't miss your seat ~ Buy early

OPENING CEREMONIES

In the Show Pavilion
 8:00am

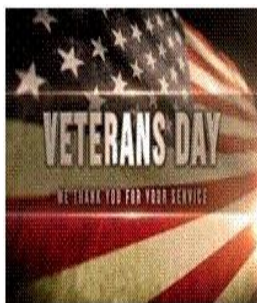
The Junior Fair Members & Senior Fair Directors invite you to join us for opening remarks, the 4H pledge, FFA creed and American Flag pledge kicking off the Fair.

Senior Fair Schedule

- 9:00 am Admission Gates Open - Adults \$5 12 & under Free
 All Day Veteran's Day - Free Admission for Veteran's & Active Duty Service members.
 8:00 am Opening Ceremony @ the Show Pavilion
 9:00 am US Flag Raising Ceremony @ the infield
 11:00 am Horticultural Judging @ the Gillette Building
 12:00 pm Flower Show Judging @ the Gillette Building
 5:00 pm King & Queen Coronation @ North Entertainment Stage
 6:00 pm Demo Derby
 6:00 pm Callunaw Rednecks—Midway Entertainment Stage
 9:00 pm Admission Gates close

FLAG RAISING CEREMONY

9:00 am on the infield
 Join us as we support the Montpelier VFW Post raise our American Flag to welcome the 2022 Williams Co. Fair



VETERANS DAY

Free Admission All Day

Sponsored by: Williams County Veteran Services

All Veterans & Active Duty personnel with ID will be given free admission all day. Spouse and minor children will also be given free admission all day when accompanied by a Veteran or Active Duty personnel.

Thank you for your service



Jeanne Shankster - Remax Preferred 224 N. Main St.
 Bryan, OH 43506
 (419) 212-1491
 Email: jeanneshankster@gmail.com

Entertainment Stage Schedule

Williams County Royalty
King & Queen Coronation
 5:00 PM
 Entertainment Stage
 (north side of the Gillette Building)



2021 King & Queen:

Nathan Herman &
 Makinzy King



2021 Princess:
 Katie Dorsten



2022 King & Queen
 Contestants:
 Grace Reitzel, Blake
 Flower, & Tyler James



2022 Princess Contest-
 ants:
 Autumn Owens &
 Reese Hand

SUNDAY SEPTEMBER 11th

Junior Fair Schedule

9:00 am Swine Show @ the Show Pavilion
 9:00 am Horse Show @ the Horse Arena
 7:00 pm Junior Fair Board Fun Night @ Horse Arena

Senior Fair Schedule

9:00 am Admission Gates Open - Adults \$5 12 & under Free
 4:00 pm Kids Fishing Derby @ the Pond
 5:00 pm Truck Pulls—Grandstand
 6:00 pm Elektrik Circus - Midway Entertainment Stage
 9:00 pm Admission Gates close



Annual Kid's Fishing Derby
 4:00 pm to 600 pm
 Children ages 5 to 12
 At the pond on the North Campus just past the campgrounds.

Rules;

- 1.) All children must be accompanied by an adult to fish.
 - 2.) All participants must pay entry fee of \$1.00
 - 3.) Fishing poles and bait are available if you don't have one.
 - 4.) WCAS is not responsible for accidents
- PRIZES ~ Biggest catch of the day and for most fish caught!
 Superintendent: Scott Carroll



Back for 2022

Junior Fairboard
Hosted
Fun Night Events

Sunday September 11, 2022
 Beginning at 7:00 P.M.
 Near the Horse Arena

Bale Hauling (Truck)




Round Bale Race

Tug-O-War



CASH Payouts to 1st and 2nd Place Winners

Rules and Registration Information can be found on Williams County Junior Fairboard
 FACEBOOK page / at the Fair Office or email to williamscojrfairboard@gmail.com

The members of the Williams Co. Jr. and Sr. Fair wish to express our appreciation for the many dedicated volunteers and sponsors of the Fair.

THANK YOU
Volunteers!
 We couldn't do it without you

Camping at the FAIR

Superintendent: Matt Kennedy

Folks don't miss the chance to make more memories by joining in the fun of camping at the Fair! We offer 10 days (Sept. 11—20) for the exciting value of \$150.00. Each site is set up for water and electric hook-up. Our sites are 25' x 55'. Maybe all 10 days doesn't fit your schedule.....join us for a couple days with our day sites for the price of \$20.00 per night. We take reservations until all sites are filled. Your reservation must be paid in full by Labor day to be guaranteed previous years site.

Call the office at 419-485-3755

Or Matt Kennedy at 419-630-3978

We look forward to camping with you this year!



Fair Parking & Exiting the Fair

Superintendent: Tim Belding

Free Parking—follow the signage and cross our bridge to the general parking area. ALL vehicles on the North side of the bridge MUST exit onto County Road M. Our bridge is 1 way traffic for vehicles. All parking at the fair is done at the owners own risk. We are not responsible for vehicles damaged or broken into.

Fair Safety & Security

Superintendent: Tim Belding

Welcome to the 2021 Williams County Fair. The committee is proud to continue its partnership with our EMS Director, EMA Director, Sheriff and County Fire Chiefs to provide a safe and fun week at the Fair. While fire protection and medical care is provided at the Fair Grounds Safety building next to Gate 3, should you need assistance call 911 and give your location on the fairgrounds and dispatchers will direct emergency providers to you.

Security is paramount along side safety of our fair guests. We ask that you abide by all rules and policies established by the Board. Sheriff Kochert and his deputies will assist in the enforcement of these and should the need arise escort any person who needs to be removed for the safety of other guests. Signage and barricades are put in place for the most effective flow of traffic, read and follow those as well as the deputies working our parking areas.

Fair Shuttle Operations

Superintendent: Tim Belding

The Board is pleased to provide shuttle services to and from our general parking and the admission gate. The tractor shuttles are donated by our partners and operated by volunteers. All guests are asked to be observant and aware while loading, unload and walking around the shuttles. We also offer golf cart shuttles from the Veterans lot to the fair for our guest who require it. A midway shuttle will assist guests who need a ride from the Fair Board Office to the Livestock Barns.

UTV/Golf Cart Policy

UTV or Golf Cart is permitted on the Fair Grounds without a permit. Driver assumes full liability and will operate the UTV \ Golf Cart in a safe and responsible manner. Violations of the policy will be cause to have your unit removed from the grounds by security & Sheriff's Office.

Towing Policy

The Williams County Sr. Fair Board reserve the right to have any vehicle towed that obstructs safe fair operations, blocks a fire lane and or is illegally parked. Expenses related to having a vehicle towed from the fair is the sole responsibility of the owner of the vehicle. Please observe all signage which is placed for your benefit and the safety of our guests.

Admission Gates

Superintendent: Tom Fry

Daily admission gates are operated by the fair via our wonderful volunteers who are working to earn money for their non-profit group. Please remember that they are volunteers and respect them. If you have a complaint about gate operations, contact Tom.

Fair Pets Policy

Registered service animals are the only personal pets allowed on the Fair midway. Additionally, the Fair prohibits leaving any pets unattended in a vehicle in any fair parking areas. Those who violate this policy will be asked to leave.

Merchants, Vendors, Rides & Tents

Superintendents: David Page

The Williams County Fair offers unique opportunities to various organizations, groups and business as we are home to 50,000 fair guests over the 8 days. There is standard booths for \$175 inside buildings as well as the tent spots also. Contact Dave to secure a spot at this our fair.

We welcome Poor Jack Amusements back this year and we encourage anyone with constructive feedback or comments to reach out to the committee members. Thank you for your continued support of the Fair!

Thank You for your Support!!

MONDAY SEPTEMBER 12th

KIDS DAY AT THE FAIR

Junior Fair Schedule

8:30 am Sheep Show @ the Show Pavilion
 9:00 am Rabbit Show @ Rabbit Barn
 2:30 pm Beef Show @ the Show Pavilion

Senior Fair Schedule

9:00 am Admission Gates Open - Adults \$5 12 & under Free
 Kids Day - Age 18 and under are free until 3PM
 9 - 11 am Fire Safety House @ the Safety Building
 11:30 am Kids Coin Find @ the Chirra Pavilion
 12:00 pm Adult Flower Show Arranging @ Gillette Building
 12:30 pm Kids Tractor Races @ the Chirra Pavilion
 1:00 pm Kids Flower Show Arranging @ Gillette Building
 2:30 pm Kids Pedal Pull Registration @ the Chirra Pavilion
 3:00 pm Kids Pedal Pull Contest Starts @ the Chirra Pavilion
 5:30 pm Bike Give-Away @ the Entertainment Stage
 7:00 pm All County Band Show @ the Grandstands
 7:00 pm Renegade Lemonade @ Midway Entertainment Stage
 9:00 pm Admission Gates close

Kids Day Events

Superintendent: Scott Carroll

Everyone age 17 and under is FREE admission at the Fair until 3:00 PM

9:00 am till 11:00 am

Fire Safety House @ the Safety Building. Meet real fire fighters and learn about fire prevention and safety. Thanks to the Williams County Fireman's Association.



11:30 am

Coin Find Contest at the Chirra Pavilion. Children ages 3 to 10 are eligible to participate in this fun event as they hunt for the coins hidden in the sawdust! Keep what you find. Age groups will be separated and registration begins at 11:30 am at the Pavilion.



12:30 am

Child Tractor Races! We provide the space and the tractor you bring the driver. Ages Groups are split between the boys and girls into classes. Class 1 is K through 1st grade. Class 2 is 2nd through 3rd grade. Class 3 is 4th through 5th grade. Trophies for 1st and 2nd place. Registration is a \$1.00 fee. Join us at the Chirra Pavilion for the racing fun.



2:30 pm

The famous Kids Pedal Pull Contest at the Fair. Registration opens at 2:30 pm at the Chirra Pavilion with the Pulls Starting at 3:00 pm. See the rules below. There is a \$1.00 entry fee. We furnish the pedal tractor and separate the boys from girls into classes. Judges ruling is final. The 1st and 2nd place winners of each class get a trophy.



RULES;

- 1.) Contestant must be able to pedal the tractor without help.
- 2.) No jerking and you get 2 chances to pull to the 4 foot mark.
- 3.) Contestants must wear shoes. No flip flops or sandals.
- 4.) Twice off the tractor ends the pull and measurement taken.
- 5.) Due to liability, all participants

must have a signed waiver by a parent or legal guardian to register.

Most importantly ~ HAVE FUN AND BE A GOOD SPORT!

All County Band Show

Monday - Sept. 12 @ 7:00PM in the Grand-stands

Superintendent: Danyel Wortkoetter

General Admission Seating \$2.00

Children 5yrs and under FREE



Come join us as we are entertained by the musical talents of our fine youth from within each School District in Williams County at the "All County Band Show". Every year the band directors spend hours working with these young musicians and put on an amazing show that includes musical talents and

KIDS BIKE GIVEAWAY



**2022
Bike Giveaway
Entertainment Stage
5:30PM**

Tickets must be turned in at the Fair Office by 5PM on Monday 9/12 to be eligible.

Every year we partner with sponsors, local business and merchant/vendors to host our annual bike giveaway. So many lucky children from all over our county have the opportunity to win a new bike!

RULES;

- 1.) Must be present to win
 - 2.) Tickets must be placed in the can in the fair office by 5PM
 - 3.) Ticket back must have the child's name written on it.
- Good luck to all the participants and a huge **THANK YOU** to our wonderful donors who make this event a success every year!

Good Luck

Junior Fair Exhibitors from Four County Career Center



State Route 34
Archbold, Ohio
419-267-3331
www.fourcounty.net



Member Since 1969



2022 FFA OFFICERS

(FRONT L-R) President - Mason Herman; Vice President - Colin Kimpel;
Secretary - Natalee Rose; Treasurer - Abigail Johnson; (BACK - L-R)
Reporter - Elizabeth Frost; Sentinel - Payton Shepard; and Student Advisor - Delaney Burghardt

TUESDAY SEPTEMBER 13th

SENIOR & DISABILITY Awareness DAY

Junior Fair Schedule

900 am Dairy Show @ the Show Pavilion

6:30 pm Animal & Me

Senior Fair Schedule

9:00 am Admission Gates Open - Adults \$5 12 & under Free

9a - 3p Senior Day - Seniors free admission (65 yrs. and older)

9a - 3p Disability Awareness Day - free admission for those with disabilities

2p - 9p Barnyard Friends @ the Dairy Barn

5:00 pm Grandstand Opens for seating

6:00 pm MAIN EVENT - Cheer Off Competition

7:00 pm Weekend Warriors—Midway Entertainment Stage

9:00 pm Admission Gates close



In recognition of Senior Day the Fair Board Directors extend a special invite of those 65 years and older to enjoy free admissions today from 9:00 am to 3:00 pm



In recognition of Disability Awareness Day, the Fair Board Directors invite all those with disabilities to enjoy free admissions today from 9:00 am to 3:00 pm

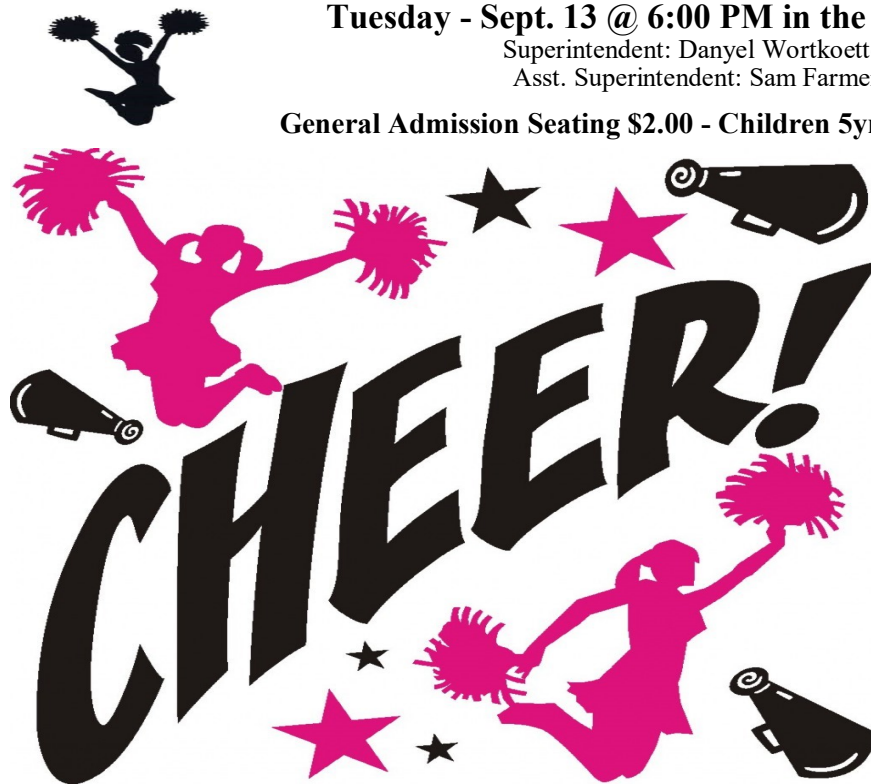
ALLSTAR CHEER OFF COMPETITION

Tuesday - Sept. 13 @ 6:00 PM in the Grandstands

Superintendent: Danyel Wortkoetter

Asst. Superintendent: Sam Farmer

General Admission Seating \$2.00 - Children 5yrs and under FREE



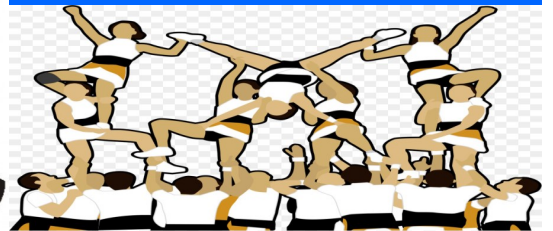
Presented by ~ NWO Elite Athletics

Welcome

Groups, Individuals & Schools

- *Spirit Awards*
- *Team Awards*
- *Jump Off Awards*
- *Tumble Awards*

Feel the energy and see the talent in this great, fun and exciting competition. See you in the Grandstands!



WEDNESDAY SEPTEMBER 14th

Junior Fair Schedule

4:30 pm Showmanship Sweepstakes @ the Show Pavilion
 7:00 pm Pig Scramble @ Grandstands
 9:00 pm Non Market Livestock Release

Senior Fair Schedule

9:00 am Admission Gates Open - Adults \$5 12 & under Free
 9:00 am Kids Day on the Farm @ the Show Pavilion
 12:00 pm Round 2—Flower Show Judging @ the Gillette Building
 1:00 pm MAIN EVENT - Harness Racing
 2p - 9p Barnyard Friends @ the Dairy Barn
 7:00 pm HayFire—Midway Entertainment Stage
 9:00 pm Admission Gates close

Pre-Planning Gives You Peace of Mind



FACKLER
 —MONUMENT COMPANY INC.—
Est. 1924

**Come see us at the
 Williams County Fair!
 September 10th
 thru September 15th**

Fackler Monument Company, INC is a 3rd generation,
 locally owned family business.

Monuments • Vases • Pet Markers • Urns
 Address Markers • Rock Lettering • Mausoleums

Largest Indoor Display in the Tri-State Area
 Monday - Friday 8AM - 5PM • Saturday 9AM - Noon
 411 West Main Street • Montpelier, OH
 419-485-5588
www.facklermonument.com




Harness racing

Wednesday - Sept. 14
1:00 PM @ the Grandstands

Superintendent: Dave Page

Admission FREE

Seating sponsored by the Williams County Harness
 Horseman's Association



Showmanship

2022 Williams County Fair
Showmanship of Showmanship Sweepstakes

Join us in the Show Pavilion as the 4H & FFA youth showcase their animal projects in competition for the Sweepstakes title! Judging will start at the Horse Arena and then moves to the Show Pavilion. 4:30 PM



*Certified Public Accountants &
 Business Development Specialists*



*Proud sponsor of the Wil-
 liams County Fair and a
 GOLD sponsor of the concert.*

ARCHBOLD OFFICE

105 Stryker Street
 Archbold, OH 43502
 Telephone: (419) 445-2000

BRYAN OFFICE

126 East High Street
 Bryan, OH 43506
 Telephone: (419) 636-8000

DEFIANCE OFFICE

101 Clinton Street
 Defiance, OH 43512
 Telephone: (419) 782-2000

VAN WERT OFFICE

595 Fox Road
 Van Wert, OH 45891
 Telephone: (419) 238-2000

THURSDAY SEPTEMBER 15th

Junior Fair Schedule

9:00 am Livestock Sale

Senior Fair Schedule

9:00 am Admission Gates Open - Adults \$5 12 & under Free

2p - 9p Barnyard Friends @ the Dairy Barn

6:30 pm MAIN EVENT - Rodeo @ Grandstands \$10

7:00 pm Out of the Blue—Midway Entertainment Stage

9:00 pm Admission Gates close



YOUTH NIGHT

Pig Scramble—Wednesday 9/14/2022

Location: Grandstands

Following the Showmanship Sweepstakes

Rules; Contestants must complete & return an official entry form and a minor's release form by Tuesday (9/13/2022) before he or she will be allowed to compete. No exceptions. Forms are ONLY available at the Pork Producers Stand at the south end of the Grandstands. The decisions of the Pork Producers is final and the Board supports all of the decisions they make regarding the event.



Pullet Pursuit—After the Poultry Show

Location: Poultry Barn

Following the poultry show

Ages 4 to 7. Giving children a chance to bring a poultry project to the 2023 fair is what this fun event is all about. Children will chase the feathered friends in hope to capture a chicken. Winners will each receive a chicken to raise for a poultry project in the 2023 fair. The forms are available in the fair office with a deadline of Saturday (9/10/2022) by noon in the office. Good luck and have fun!



WCAS Constitution

Article I

Section 1 – Name

This organization shall be known as the Williams County Agricultural Society.

Article II

Section 1 – Purpose

The purpose of this Society shall be for the improvement of agriculture, domestic, industry, public schools, better acquaintance of our citizenship and for wholesome entertainment and shall be the overseers of the Williams County Agricultural Society Land Preservation Project

Article III

Section 1 – Officers & Directors

The officers of this Society shall consist of a president, vice president, secretary-treasurer, and the board of directors consisting of 8 or more members.

Section 2 – Ex-Officio Directors

The Williams County Extension Educator / 4H Youth Development, the Williams County Extension Educator / 4-H-ANR Program Assistant, the Williams County Extension Educator / Natural Resources and Community Development, the Williams County School Superintendent, and the Williams County Commissioners shall be ex-officio members of the Board of Directors.

Article IV

Section 1 – Annual Meeting

The Annual Meeting of the Board of Directors shall be held the third Thursday in October each year.

Section 2 – Regular Meeting

The Society shall hold a regular meeting of the Board to conduct business on the third (3) Thursday of each month in a place upon the fairgrounds as designated by the Board.

Section 3 – Special Meeting

The President of the Society or the Executive Committee of the Board may call a special meeting of the Board to conduct special business. To call a special meeting of the Board, the President shall make proper notice to every Director of the Board no sooner than 72 hours and no later than 24 hours prior to the meeting time and date. Notice of the same shall also be given to public and media outlining the place and time of the meeting.

Section 4 – Emergency Meeting

The President of the Society may call an emergency meeting of the Board to conduct emergent business. To call an emergency meeting of the Board, the President shall make proper notice to every Director no sooner than 24 hours and no later than 12 hours prior to the meeting time and date. Notice of the same shall be given to the media outlining the place and time of the meeting. A public notice shall be posted on the fair board office door within the same time period as that of Director notice outlined above.

Article V

Section 1 – The Board

One third (1/3) of twenty-six (26) potential directors shall be elected annually from in Williams County as listed below, on or after the second day of the fair to be held each year on the Fairgrounds of the Society in the town of Montpelier, County of Williams. One member shall be chosen from each township in Williams County, one from within the corporation limits of the City of Bryan, villages of Montpelier, Edon, Edgerton, Stryker, Pioneer and West Unity, Ohio; four members-at-large from any District of the County; and (woman/man) at-large from each of the three (3) Districts as flows; District #1 Northwest, Bridgewater, Madison, and Millcreek; District #2 Florence, Superior, Jefferson and Brady; District #3 St. Joe, Center, Pulaski and Springfield. Only members of the Williams County Agricultural Society are eligible to become directors and only directors can hold office. The County Agriculture Society members shall have a right to vote at the annual election of Directors of the Society. The Board of Directors shall fix the membership fee. The Polls shall open at 1:00 pm and close at 7:00 pm the day of election at the Annual Elections. Voting will be by ballot furnished by the Society. The President shall appoint clerks and judges from its membership.

Section 2 – Candidate for Director

Members of the Williams County Agricultural Society must declare their candidacy for the office of Director by filing with the Secretary a petition signed by 10 members of the Society. Any Candidate for Director is subject to a criminal background check by the Williams County Agricultural Society. The Board of Directors shall meet in executive session to discuss the results of any background check and shall notify the petitioner in writing if his or her petition is declared invalid as a result of the criminal history. The Society shall prohibit any candidate, Director or Officer from the Board who has a felony conviction. Once the petition has been declared valid the candidate shall be added to the ballot for election. Candidates for office of Director must be members of the Williams County Agricultural Society and be residents of Williams County, Ohio. All petitions for consideration must be submitted no later than the third Thursday of October each year. Any Director who currently serves the Society Board may run for re-election for his/her seat by filing his/her petition in the foregoing prescribed manner providing his/her term of office is complete. Any Director who currently serves the Society Board and changes residence may run for his/her new prospective seat by first resigning his/her seat and waiting 15 days before filing a new petition.

Continued from page 34 - Constitution**Section 6 – Suspension of a Director or Officer**

A member of the Board of Directors or an Officer of the Society who absents himself from three (3) consecutive regular meetings or a total of four (4) for the year or who neglects or refuses to perform duties assigned to him/her may be temporarily suspended by the Executive Committee. Notice shall be mailed to the suspended Director or Officer within three (3) days of such action, and he/she shall be given an opportunity to defend himself/herself at the next meeting of the Board and if the suspension is confirmed by a two thirds ($\frac{2}{3}$) vote of the members present and voting, the office shall be declared vacant after a period of thirty (30) days and the vacancy filled in the prescribed manner. A Director or Officer whose suspension is confirmed by the Board may appeal the suspension by submitting to the executive committee a letter requesting time to speak in front of the Board at the next regular meeting. If the Board by a vote of two thirds ($\frac{2}{3}$) declines the appeal, the Director or Officer is then banned from the Board and the fairgrounds for a period of three (3) terms or nine (9) years.

Article VI**Section 1 – Officer Election**

The Board of Directors at their Annual Meeting shall elect a President and Vice President. Their term of office shall be for one year and until his/her successors are elected. The President and Vice President shall be directors of the Board. The Secretary and the Treasurer may or may not be directors. IF the officers of Secretary and or Treasurer are filled by directors of the Board, they shall be elected in the same manner as the President and Vice President. Their term of office shall be for one year and until his/her successors are elected.

Section 2 – Annual Elections:

Annual elections of the membership shall be held on Monday during the annual fair with the polls open from 1:00 pm to 7:00 pm.

Article VII**Section 1 – President**

The President shall preside at all meetings of the Society and of the Board and such other duties as pertain to the office and shall be entitled to vote upon all questions coming before the board.

Section 2 – Vice President

The Vice President shall fulfill the duties of the President in his/her absence and any other obligations as pursuant to the office or as directed by the President.

Section 3 – Secretary

It shall be the duty of the Secretary to keep a record of the proceedings of the meeting of the Society, the Board of Directors and the Executive Committee; record all entries for premiums, receive all monies due the Society except for tickets sold by the treasurer, and pay the same to the treasurer, sell all privileges, superintend the printing and distribution of the Society's catalogs; make a report annually to the Board of Directors at the November meeting, and shall also make a report annually to the State Board as required by the rules; shall notify all members of the Board of Directors of all called compensation as the board may deem proper.

Section 4 – Treasurer

It shall be the duty of the Treasurer to collect all money for the Society, pay all orders drawn upon the Society accounts as directed by the Executive Committee and or Board of Directors. Further, the Treasurer will submit to the Board a financial statement detailing all receipts of incomes and debits for accounts each month. The Audit Committee shall conduct bi-monthly reviews of the Society accounts to further complete a check and balances as well as an outside firm shall review at minimum bi-annually all accounts of the society and report to the Board at its November meeting the amount of receipts and expenditures.

Continued from page 35 - Constitution

Section 5 – Executive Committee

The Executive Committee shall be comprised of the President, Vice President, Secretary and any Directors in good standing of the Board. The committee being comprised of at least three (3) shall consider quorum anytime 4 of its members are present. The Executive Committee is charged with day to day operations of the fairgrounds and fair board as well as any other duties and powers as assigned by the Board of Directors. The members of the Executive Committee shall be the authorized signors of all warrants drawn upon the Society's Accounts.

Section 6 – The Board Duties & Quorum

The Board of Directors shall charge of the management of the affairs of the Society, one more than half of the total board in good standing shall constitute a quorum for the transaction of business.

Article VIII

Section 1 – Fair Dates

The annual exhibition shall be held at the grounds of the Society at some period between the first day of August and the first day of November.

Article IX

Section 1 – Constitution Amendments

The Constitution of a Society shall not be amended except by a majority vote of the membership voting at the annual meeting of the Board of Directors. Amendments to the Constitution may be proposed by; a majority of the Board of Directors at a scheduled meeting voting in favor of placing an amendment on the ballot for the annual elections. If an amendment is proposed as set forth above, it shall be submitted to the membership of the Society at the annual meeting. Said amendment shall be published in at least one newspaper of general circulation in the county or district concerned no less than three but not more than 10 days before it is to be voted on. When there is more than one amendment, it shall be submitted in a manner that the members may vote on each amendment separately.

Previous revision date unknown.

Revised by ballot vote 10/15/15 President Dave Page

Revised by ballot vote 11/04/17 President Dave Page

Revised by ballot vote 11/03/18 President Matthew Kennedy

Revised by ballot vote 11/2/2019 President Matthew Kennedy

Revised by ballot vote 11/7/2020 President Matthew Kennedy

Revised by ballot vote 9/13/2021 President Mathew Kennedy

NOTICES/INFORMATION/RULES

In accordance to the rules of the Department of Agriculture for the State of Ohio and the laws of Ohio Revised Code 1711 and Ohio Administrative Code 121, 755 and 901 the Williams County Agricultural Society makes official public notice of the following:

Constitution - A copy of the Constitution of the Williams County Agricultural Society is available in the fair office during regular hours.

Board Policies & Procedures - The Board of Directors makes available during office hours for the public a copy of voted and approved Policies and Procedures. A sample list of those are:

- Code of Conduct • Code of Ethics
- Conflict of Interest • Whistle Blower
- Record Retention • Alcohol
- Open Records Requests
- Equipment Operations
- Auxiliary Directors

And other minor operational policies.

Redbook - A copy of the Ohio Fairs Redbook is available online as well as in the Fair Office.

Election Notice - Annual Election of Directors is to be held Monday during the Annual Fair at the Thaman Building on the Fairgrounds. The polls shall open at 1:00pm and close at 7:00 pm. Memberships are on sale in the Fair Office during regular hours and cost \$1.00. No membership may be sold 15 days prior to the elections.

OHIO'S LIVESTOCK HEALTH EXHIBITION RULES

The Williams County Agricultural Society shall operate under the rules of ORC 901: 1-18 which outlines the guidelines and laws of exhibiting animals at the annual fair. A copy of these regulations are available in the fair office.

What is the Williams County Junior Fair?

Williams County Junior Fair is the showcase of projects completed by youth involved in FFA, 4-H, Boy Scouts, Girl Scouts, and Farm Bureau Youth. The Jr. Fair program is part of the Williams County Fair, which is organized and administered by the WCAS (a.k.a. Senior Fair Board). The fair provides the opportunity for youth to exhibit the results of their project efforts, to have a project evaluated by a hired judge and to compete for awards and prizes. Participation at the county fair is not required for project completion, although it is strongly encouraged. Participation is required; however, to receive a premium. Rules and regulations for the Jr. Fair are designed to promote maximum educational experiences. They are created in part by the Junior Fair Board along with the Sr. Fair Board.

What is the Williams County Agricultural Society?

The WCAS (Senior Fair Board) supports Williams County 4-H by sponsoring a Williams County Jr. Fair. They are the legal sponsoring authority. They assign Sr. Fair Board members to work with the Jr. Fair and Jr. Fair Board activities. The Fair Board offers premiums for exhibiting, pays for judges, ribbons, electricity, sawdust for shows and supplies necessary to operate the Junior Fair efficiently. They also decide which buildings and facilities will be used. The Sr. Fair Board has final say on the Junior Fair rules which are recommended by the 4-H Advisory Council and Junior Fair Board. The Sr. Fair Board obtains judges for the Senior and Junior Fair. Passes are available to 4-H members over 12 years of age. The Sr. Fair Board is responsible for distributing members' passes. The Sr. Fair Board meetings are held on the third Thursday of each month. All buildings and facilities on the fairgrounds belong to the Sr. Fair Board regardless of the source of money.

Junior Fair Rules & Regulations

I. THE PURPOSE OF THE JUNIOR FAIR

The purpose of the Junior Fair shall be to promote and encourage agriculture, horticulture, production of better livestock and to improve domestic, commercial and educational interests of the young people of Williams County.

II. ELIGIBILITY

Any boy or girl belonging to the following organizations in Williams County: FFA Chapters and Agri-Science Classes, 4-H Members or Other Youth Organizations

1. Boys and girls who are regularly enrolled in any of the above named organizations are eligible to show providing they have complied with the rules of the Junior Fair as given in this premium book. Exhibitors must successfully meet all requirements of their youth organizations before being eligible to exhibit for competition.
2. Other youth organizations that are affiliated with county, state and national organizations.
3. There shall be two classes of exhibits on exhibition at the Jr. Fair, individual and group. Individual exhibits and awards shall be limited to those organizations supported whole or part by public monies as specified by revised code of the General Assembly of the State of Ohio. At the present time, this includes 4-H and FFA.
4. Members' entries must fit into the divisions allowed for their organizations by the Junior Fair (e.g. only 4-H members may exhibit in the 4-H project classes; only 4-H and FFA members may exhibit in the livestock classes; other specific project eligibility are listed by department.)
5. Should an exhibitor belong to both a 4-H club and a FFA chapter in the same county, in all cases, the projects must be separate and different. Examples of separate and different projects are breeding-market lamb; beef breeding-market beef; cows in production-dairy heifer not freshened; horse production-horse riding; and laying hens-market poultry.
6. The Ohio Department of Agricultural requires all youth who produce livestock for breeding, market and/or produce a marketable livestock commodity (i.e., milk) to attend a general Livestock Quality Assurance program each year or test out at the appropriate age

level. Any youth failing to meet this requirement will not be permitted to exhibit livestock (excluding dogs, breeding rabbits, llama and small animals) at the Ohio State Fair and the Williams County Fair. Check 4-H Calendar for LQA and testing dates. Deadline is June 1 of current year.

7. Livestock Project Interview: All 4-H and FFA members must pass an oral interview for each project enrolled to exhibit and/or sell that project animal (s) at the Williams County Fair. Any youth failing to pass the interview will receive a letter stating such. The Junior Fair eligibility for the respective specie(s) will be at the discretion of the Senior Fair Board Livestock Committee. Note: Definition of pass: Have the project book and feed record completed to date, completed one page report either in book or on separate paper (one report per species) and attempt to answer oral questions that are taken from the project book(s). Livestock Interviews will be held in August of current year. Anyone not able to attend on the original interview date should contact the OSU Extension office prior to that date to schedule an early interview. Early interviews must be completed before the regularly scheduled interview date. Youth missing the official Livestock Interview date will have no more than 7 days following the official interview date to pay a fee of \$50, payable to the Williams County Ag. Society, complete the Livestock Interview and turn in an entry form. Anyone missing both deadlines will not be able to exhibit an animal at the Williams County Fair for the current year and should complete their project(s) with an educational display.

8. Entry Forms are to be turned in at Livestock Interviews or at the time of Early Livestock Interviews. All FFA Farm Shop and Farm Products Department entries must be turned in by June 1 of the current year.

9. All animals must comply with health requirements of the Williams County Fair and Ohio State Department of Agriculture.

10. All animals (exhibits) must be fully owned as evidenced by a bill of sale before June 1 of current year; with the exception of the pen of three market chickens and beef projects. Be sure to check with each division for different rules.

11. Any project not meeting all Jr. Fair project requirements will not enter the fairgrounds.

4-H and Cloverbud Membership Policy

Ohio 4-H Membership is the youth development initiative of Ohio State University Extension and is open to all boys and girls in Ohio. Cloverbud membership is open to youth 5-8 years old and in grades K-2. Cloverbuds is a non-competitive program. Traditional 4-H membership begins when the youth is at least eight years of age and in the third grade as of January 1. A member must not have passed his or her 19th birthday on January 1 of the current year. 4-H enrollment deadline is April 1 with April 15th being the deadline for changes. Only traditional 4-H club members can exhibit livestock, compete for awards or sell livestock at the Williams County Junior Fair. 4-H Livestock project books must be up-to-date when junior fair entry forms are submitted. 4-H members must attend four club meetings or club activities to compete by August 7 which is Livestock Interview day.

4-H membership across county lines

Ohio State University Extension administers the 4-H youth development education program whose mission is to develop youth to reach their fullest potential as capable, competent, caring, and contributing citizens. Each county in Ohio conducts the 4-H youth development program to accomplish this goal. In order to affirm Ohio State Extension's position concerning across county (and/or state lines) 4-H membership and establish guidelines in this area to fulfill the above mission, the following philosophy and process statements are provided.

1. Youth are expected to affiliate with the program in their county of residence. 4-H membership in a county other than the county of residence is limited to an individual who may live in one county very close to a county line, but is logically oriented to another county by school district, church, town or city corporation limits, and/or other governmental boundaries.
2. 4-H membership in two counties simultaneously is NOT possible. Youth must choose one county.
3. It is recognized that limited situations may occur where membership in a county other than the county of residence might be positive. The Educators in both counties must be in agreement that the change should occur. This agreement should be based on their professional judgment in accord with the opening paragraph of this policy. Please contact the OSU Extension Office in Williams County to request an "Across County Lines" form.

4. Any change motivated by perceived competitive or sale advantage, any change due to controversial issues, or other similar motivations will not be seen as justified reasons for consideration for membership in a county other than the county of residence, and should be automatically rejected by the Educators involved.

FFA Membership

In FFA, entries are open to regularly enrolled high school Agri- Science students and enrolled in their school FFA Chapter. A member must not have passed his or her 19th birthday on January 1, of current year, to be eligible. Exhibits must be a part of the student's occupational experience program, and follow all Junior Fair rules for exhibit and competition.

III. LIVESTOCK PROJECT BOOKS (UPDATED)

1. All livestock projects books will be considered complete at the end of the Livestock Interview.

IV. GENERAL

1. All exhibitors shall abide by the Junior Fair Rules & Regulations regarding tampering and/or misrepresentation, showing & fitting.
2. Pedestrian safety must be observed at all times.
3. All Junior Fair Livestock (including equine) may arrive between 8:00 a.m. and 7 p.m. on the Friday before the opening day of the Williams County Fair.
4. Youth must be present to either show the project animal or sell the project animal. Youth cannot be absent for both or he/she will forfeit the opportunity to sell the project through the Junior Livestock Sale.
5. Any exhibitor may be entered in open classes provided exhibitor conforms to Open Class rules.
6. All livestock not being sold are released early. All livestock not being sold may leave on Friday before 9:00am or after 8:00pm.
7. All livestock should stay on the fairgrounds in designated areas.
8. Any exhibit leaving early without written permission from the Senior Fair Board Superintendent will forfeit all premiums and awards and will be barred for one

SHOW NUMBERS - All livestock exhibitors need to stop by the Jr. Fair Board Office to pick up their show numbers once they have checked in their animal (s) into the barns. They will have until close of business on the first Saturday of the fair to pick-up their show numbers. Business hours will be posted in the Jr. Fair Office and shared ahead of time for exhibitors.

9. If an animal designated for the Jr. Fair Sale dies during the fair, the exhibitor cannot participate in the Jr. Fair Sale. Exhibitors will still receive premiums earned.

10. Once an animal leaves the fairgrounds, it will not be allowed to return.

V. HEALTH REGULATIONS

1. Effective 2009, health certificates are not required unless animals have to cross a state line to attend the Williams County Fair.

2. Large animals (beef, dairy, equine, goats, llamas, sheep & swine) should be exercised daily for better animal health. Livestock is to be exercised in designated areas. No livestock is permitted to be exercised on the midway, nor in the camping area.

3. **All animals are to be dehorned and healed prior to fair with no regrowth that is pointed and/or dangerous. If, in a dehorned animal, there is regrowth (scurs), which resembles horn/horns, that animal will be evaluated by the official fair veterinarian. The exception to this rule would be Angora Goats and breeding Boer does.

4. Completed DUNF papers must be turned in at time of weigh-in. One DUNF required for each market animal. Pen of 3 market poultry and pen of 3 market rabbits require only one DUNF per pen.

5. All required forms must be checked as animal(s) are unloaded or weighed at each livestock department. For exhibitors showing dogs, papers will be checked at the beginning of the show.

6. Any livestock show could be canceled due to any disease outbreak upon authorization of the State Veterinarian.

7. Any animal deemed unsafe to spectators, exhibits and/or exhibitors may be sent home. This determination will be made by the Senior Fair Board Superintendent in charge of the respective division and the Senior Fair Board Livestock Committee members. Their decision is final.

8. Any animal may be deemed unworthy of show due to health condition or injury. This animal will be sent home. This determination will be made by the Senior Fair Board Superintendent in charge of the respective division and the Senior Fair Board Livestock Committee members. Their decision is final.

VI. CODE OF ETHICS/ PRACTICES

1. Participation in Jr. Fair should be considered a privilege. All Jr. Fair rules must be followed.

2. Be cooperative to all Jr. and Sr. Fair officials, volunteers, parents, and members of the public.

3. Practice good sportsmanship in all fair events or activities.

4. Exhibitors should make quality their goal in all exhibits (livestock exhibitors refer to the Code of Practices on care of animals.)

5. Parental help is allowed. Guiding and teaching members to do the work, that they are capable of doing, should be the primary goal.

Code of Practices The following describes general responsibilities of the exhibitor and all persons in their authority, in the proper care and handling of animals raised for food and fiber.

1. To provide food, water and care necessary to protect the health and welfare of animals.

2. To provide a safe and healthy environment for animals, that is clean, well-ventilated and provides ample space.

3. To use humane and sanitary methods when it becomes necessary to dispose of animals.

4. To make timely inspections of all animals to evaluate the health and ensure that all basic requirements are being met.

5. To ensure proper handling techniques are used to eliminate any undue stress or injury when manual manipulation is necessary.

6. To provide transportation for animals that avoids undue stress or injury caused by overcrowding, excessive time in transit or improper handling when loading or unloading.

7. To make management decisions based on scientific fact and to consider the welfare of the animals.

VII. STALL/HOUSING

1. Senior Fair Board livestock superintendents are in charge of assigning buildings or barns, or tents, if necessary, for the different livestock departments.

2. Each exhibitor is responsible for bringing necessary feed, water, equipment and bedding to properly maintain exhibits.

3. Aisles, stalls and/or pens are to be kept clean throughout the fair. After the sale, manure is to be removed from the stalls/pens. There will be no cleaning of pens during the show for that species or during the sale.

Junior Fair Board and Senior Fair Board Superintendents can down grade the premium for not maintaining proper care of animals exhibited.

VIII. SHOWING/FITTING

1. Junior Fair exhibitors must show their own animals. Exceptions will be made only for exhibitors who may be physically impaired, who have two animals entered in the same class, or an exhibitor is absent on show day due to other commitments. In case of these exceptions, another boy or girl who is a Junior Fair member may exhibit the animal with the authorization of the Superintendent in charge. If a Junior Fair Livestock Exhibitor cannot be present at the time of judging the exhibitor will need to present to the Junior Fair Board office a written permission notice signed by the parent.

2. Show attire should include clean, neat appropriate clothing. This includes hard soled shoes. No writing, farm name, advertising or 4-H or FFA logos permitted on clothing. Refer to individual department rules for specific dress code.

3. Fitting of animals shall be done only by exhibitor and immediate family members. Immediate family consists of father, mother, step-father, step-mother, grandparents, sibling or guardian. Current Williams County Junior Fair exhibitors may assist each other in the fitting/grooming process. Exhibitor of animal should take an active role in the grooming process. Senior Fair Board Superintendent will address any infraction of the above rule immediately. Any further penalties or disqualifications will be addressed by the Senior Fair Board Livestock Committee.

IX. JUNIOR LIVESTOCK TAMPERING AND/OR MISREPRESENTATION

1. Any exhibitor entered or planned to enter the Junior Fair classes that are misrepresented or exhibited with unacceptable practices may be removed from the Junior Fair Show and Sale and may forfeit premiums and awards. The interpretation and enforcement of these rules and all Junior Fair rules will be made by the Rules Interpretation Committee. Application to any animal, of any material which will conceal the true conformation or condition of said animal, or make said animal appear more sound than it actually is, will result in disqualification.

2. Tampering and/or misrepresentation as to breeding, age, ownership, custody and any other irregularity in showing will be considered fraud and deception.

3. To maintain a high degree of confidence and integrity in the livestock shows, the Senior Fair Board reserves the right to disqualify any animal fitted in an unethical manner and disqualify the exhibitor and the exhibitor's assistant who fitted the animal involved.

4. Unethical fitting shall include any cutting or tearing of the hide, cutting or tearing underneath the hide or removal of tissue in any attempt to alter the shape or appearance. It shall also include attempts to disrupt or change normal dental development, dyeing or coloring hair, adding artificial tail- heads, switches, polls, hair and heels, as well as any attempt to change the conformation and degree of firmness, by administration of fluids or air internally or externally in a liquid, solid or gaseous state. Transparent grooming materials only may be used.

5. The use of clenbuterol and other unapproved drugs is prohibited.

6. All exhibitors, their immediate family, and any other parties involved in the unethical fitting and showing of an animal will be barred forever from exhibiting or showing at this fair and will forfeit all premiums, prize money and awards won in any junior fair and/or open class divisions.

7. Should fraud or deception, and proof, as determined by the Senior Fair Board, be discovered after the animal or animals have been shown and prior to the sale, such animal(s) shall not be permitted to sell.

8. Should violation be discovered after the sale, all sale money shall be returned to the buyer and the animal, carcass value shall be returned to the exhibitor. All placings in show will stand. No animals will move up. Any carcass suspected of being tampered with or suspected of containing drugs will be detained until the investigation is complete.

9. If the carcass is condemned at the packing plant for any reason, it shall be grounds for disqualification in the on-foot and carcass division of the show. Additionally, all premiums and sale money shall be forfeited and the loss of the animal be incurred by the exhibitor.

10. No painting, coloring or application of other foreign substances to the hooves or any other part of any animal with the exception of equine hooves.

11. No icing or cold compresses can be applied to any animal unless administered or prescribed by a licensed veterinarian for fever.

X. PREMIUMS

1. Premium money is paid by the Williams County Ag Society for exhibition of project work. The premium disbursed is based upon amounts set for each category or department on an individual or group basis.

JUNIOR FAIR SALE RULES

ALL MARKET ANIMALS

MUST GO TO HARVEST/SLAUGHTER

Thursday, Sept. 15, 9:30 a.m.

1. All animals to be sold in the Junior Fair Sale must have been shown in the Junior Fair market classes.
2. If an animal designated for the Jr. Fair Sale dies during the fair, the exhibitor cannot participate in the Jr. Fair Sale. Exhibitors will still receive premiums earned. Also for no reason can anyone soliciting/put ads on pens for buyers or anything else.
3. Animals will be weighed upon arrival from 8:00am – 7:00pm.
4. There will be additional emphasis placed on a desirable market weight. Minimum pounds for Beef Steers must be 950 pounds, Swine 220 pounds, Sheep 90 pounds, Market Goats: min. 50 pounds, Feeder Calves min. 300 – 650 pounds, Rabbits Pen of Three, each rabbit should weigh 3.5 – 5.5 pounds, Rabbit Fryer 3.5—5.5 pounds, Rabbit Roaster 5-9 pounds and Poultry Pen of Three, each chicken should weigh 5-7 pounds each. All animals go through the scales once, no reweighs.
5. Livestock Committee representatives obtain a market value with livestock buyers.
6. An exhibitor may pass through the sale ring only one time unless they are the owner of multiple market grand champions or reserve grand champions.
7. All Market Grand Champions and Reserve Grand Champions must sell. Feeder calves are the only exception to the rule and they have the option to sell.
8. All market livestock going through the Junior Fair Sale must go to a buyer or packer. Exhibitors may sell any additional market animals at market price to a packer privately.
9. Destination forms are to be filled out by exhibitors and signed by a parent or guardian. Destination forms identify only the market animals and verify destination of each animal – sale, direct or custom processing. Forms are due at time of weigh-in. Changes can be made by an exhibitor selected as Grand and/or Reserve Champion only.
10. Each exhibitor is responsible to the buyers for the animal(s) until they are loaded on the packers' truck.
11. Junior Fair Sale Fee will be based on 5% of the gross sale for Junior Fair improvements.
12. Sale fee will be used for Junior Fair expenses, advertising, promotion and improvements.
13. The order of sale rotates yearly. The division of livestock sold first one year will be sold last the following year. Single market animals will be sold first then the market pens. A division being added to the sale starts at the bottom of the order. Dairy Feeders, Beef Feeders, Market Meat Goats, Market Swine, Dairy, Beef Steers, Dairy Steers, Market Sheep, Broilers, Market Turkeys, Market Ducks and Market Geese, Rabbits - Single, Rabbits - Pens, will each rotate within themselves when they move to the end of the sale.
14. Junior Fair Sale Committee is responsible for all areas of the sale; banking, promotion and advertising, selecting and coordinating auctioneers, consignors, appraisals, and show and sale barn.
15. A number system will be used for bidding at the Junior Fair Sale. Previous year buyers will be sent a number. Extra numbers will be available at the sale for new buyers.
16. Buyer or buyer's representatives will receive a statement at the Junior Fair Sale. Buyers are asked to be ready to pay immediately following the sale.
17. Buyers will receive buyer recognition banners when they receive their statement at the sale. The Sale Committee consists of the representatives from Senior Fair Board Livestock Superintendents, 4-H Council (4), and the 4-H Extension Educator.
18. Dairy exhibitors will walk a dairy project through the ring individually and sell it to the highest bidder. The animal remains the property of the Junior Fair exhibitor.
19. Any exhibitor wanting to donate to the Junior Fair Buildings or 4-H Activities Fund must fill out and sign a form consenting to a specific percentage (5%; 10% ; etc.,) figured on Gross Sale Value, to be deducted by no later than Friday noon and signed by parent or guardian.
20. Exhibitors must be present or have arranged for another Jr. Fair member to present their animal in the sale arena. No animals will be sold without the youth or their representative present. Respective Senior Fair Board barn superintendent must be notified of the authorized substitute representative.
21. Youth must be present to either show the project animal or sell the project animal. Youth cannot be absent for both or he/she will forfeit the opportunity to sell the project through the Junior Livestock Sale.
22. If an exhibitor should miss their position in the Jr. Fair Sale line-up, he/she will go to the end of that species that is selling. If you miss that position he/she will go to the end of the entire sale.

Thank you to all of our Livestock Buyers, Auctioneers and Sale Volun-

Williams County Junior Fair - Department 200 - Poultry

Superintendent
Matt Kennedy
419-630-3978

SATURDAY - Sept. 10th
1:00 PM
Poultry Barn

A. Rules and Regulations

1. Poultry are subject to a negative blood test and inspection by the fair veterinarian, if not obtained within 60 days from a NPIP Certified hatchery and have an NPIP form 15. This does not include waterfowl.
2. Exhibitors are limited to two entries per class.
3. Premiums to be paid to the top 4 grades per project plus showmanship.

B. Market Classes

1. To exhibit a pen of three market chickens, members must be enrolled in the appropriate (market) project or the FFA poultry project.
2. A meat pen of Market Chickens (150CM) consists of three chickens between 6-8 weeks of age weighing between 5-7 pounds each. Animals not meeting this requirement are not eligible to sell in the Junior Fair Sale and will be graded separately.
3. Market Turkey (150TM) class consists of two males that are approximately 18 weeks of age. Turkeys can be shown in showmanship class and are shown similar to swine, with a cane.
4. Market Ducks (150DM) class consists of two market-type ducks (either sex) approximately 18 weeks of age.

C. Breeding classes

1. Must be enrolled in 150CEP to exhibit in the Pullet Class and/or Commercial Hen Class. Must be enrolled in the 150CE to exhibit in Bantam and/or Standard classes. FFA members must be enrolled in the FFA poultry project.

Department #200/Section PO/Poultry Classes

200. Senior Showmanship (age 15-18)
201. Intermediate Showmanship (age 12-14)
202. Junior Showmanship (age 8-11)
203. First Year Showmanship (age 8-18)
204. Showman of Showmen
205. Pee Wee Showmanship
206. Bantam Rooster (1) born before Jan. 1st
207. Bantam Hen (1) born before Jan. 1st
208. Bantam Cockerel (1) after Jan. 1st
209. Bantam Pullet (1) after before Jan. 1st
210. Standard Rooster (1) born Jan. 1st
211. Standard Hen (1) born before Jan. 1st
212. Standard Cockerel (1) Born after Jan. 1st
213. Standard Pullet (1) Born after Jan. 1st
214. Pullet Class (2 pullets beginning egg production, approx. 5 months old)
215. Commercial Hen Class (2 hens in egg production and over one year old)
216. Duck, Drake
217. Duck, Hen

218. Goose, Gander
219. Goose, Hen
220. Turkey, Tom
221. Turkey, Hen
222. Self-Determined project (must carry the project)
223. Market Turkey (two males)
224. Market Ducks
225. Market Geese
226. Market Pen of Three Chickens

Premiums

Showmanship Classes: A-\$3.00 B-\$2.00 C-\$1.00

Market Classes: A-\$4.00 B-\$3.00 C-\$2.00

Breeding Classes: A-\$3.00 B-\$2.50 C-\$2.00

Williams County Junior Fair - Department 300 - Rabbit

Superintendent
Matt Kennedy
419-630-3978

Monday - Sept. 12th
9:00 AM
Rabbit Barn

A. Rules and Regulations

1. All rabbits, including market meat pens and market roasters, must have a tattoo in the left ear before/as of check in time at the fair. Any rabbits without a tattoo will be graded separately and not eligible for championship honors.
2. Entries in Rabbit Divisions are limited to two entries per class for breeding classes, a maximum of one doe and litter per class, two meat pen entries, two roaster entries, and a showmanship class using one of the rabbits entered by the exhibitor.
3. Show order will include showmanship classes, class 4, class 6, crossbred bucks (all ages), crossbred does (all ages), doe & litter (to be judged in their cage), and market classes.
4. Premiums will be paid to the top 4 grades per project plus showmanship.

B. Breeding Classes

1. Purebred rabbits will be divided and shown by the following breed classes:

Class 4-Fancy

English Angora, French Angora, Belgian Hare, Britannia Petite, Standard Chinchilla, Dutch, Dwarf hotot, English Spot, Florida White, Harlequin, Havana, Himalayan, Jersey Wooly, Lilac, American Fuzzy Lop, Holland Lop, Mini Lop, Netherland Dwarf, Polish, Rex, Mini Rex, Rhinelander, American Sable, Mini Satin, Silver Marten, Tan, Thrianta, Lionhead.

Class 6-Commercial

American Argent Brown, Beveren, Californian, Champagne D'Argent, Checkered Giant, American Chinchilla, Giant Chinchilla, Cinnamon, Crème D'Argent, Flemish Giant, Giant Angora, Blanc de Hotot, English Lop, French Lop, New Zealand, Palomino, Satin, Satin Angora, Silver Fox.

2. Crossbred rabbits may also be shown.
3. All breeds (purebred and crossbred) are eligible for best in show.

C. Market Classes

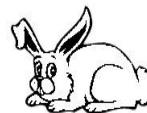
1. Market meat pen of three rabbits are required to be born at the member's home from a down owned by the member. The doe must be in the member's possession by June 1st of the current year. A meat pen consists of three rabbits not over 75 days old with each rabbit weighing 3.5-5.5 pounds to be eligible for championship classes and to sell through the ring. A market meat pen must be purebred or crossbred commercial type rabbits.
2. Market roaster class consists of one (market type) meat rabbit weighing 5-9 pounds and under six months of age to be eligible for championship classes and to sell through the ring.. Rabbits must be purebred or crossbred commercial type rabbits. Market roaster projects must be in the member's possession by June 1st of the current year.
3. Market fryer class consists of one (market type) meat rabbit weighing 3.5 to 5.5 pounds and under 75 days old. Rabbits must be purebred or crossbred commercial type rabbits.
3. All market rabbits go through the scales once; no re-weighs. DUNFs must be turned in on Friday's weigh-in day. Only meat rabbits meeting weight requirements will be eligible to sell in the Junior Fair Sale. Non-qualifying rabbits will receive a ribbon only.

DEPARTMENT 300 - Rabbit (cont.)**Department #300-Section RA/Rabbit Classes**

- 300. Senior Showmanship (age 15-18)
- 301. Intermediate Showmanship (age 12-14)
- 302. Junior Showmanship (age 8-11)
- 303. First Year Showmanship (age 8-18)
- 304. Showman of Showmen
- 305. Pee Wee Showmanship

Breeding Classes

- 306. Dutch Sr. Buck (over 6mo.)
- 307. Dutch Sr. Doe (over 6mo.)
- 308. Dutch Jr. Buck (under 6mo.)
- 309. Dutch Jr. Doe (under 6mo.)
- 310. Polish Sr. Buck (over 6mo.)
- 311. Polish Sr. Doe (over 6mo.)
- 312. Polish Jr. Buck (under 6mo.)
- 313. Polish Jr. Doe (under 6mo.)
- 314. Holland Lop Senior Buck (over 6 mo.)
- 315. Holland Lop Senior Doe (over 6 mo.)
- 316. Holland Lop Junior Buck (under 6 mo.)
- 317. Holland Lop Junior Doe (under 6 mo.)
- 318. Mini Lop Sr. Buck (over 6 mo.)
- 319. Mini Lop Sr. Doe (over 6 mo.)
- 320. Mini Lop Jr. Buck (under 6 mo.)
- 321. Mini Lop Jr. Doe (under 6 mo.)
- 322. Netherland Dwarf Sr. Buck (over 6 mo.)
- 323. Netherland Dwarf Sr. Doe (over 6 mo.)
- 324. Netherland Dwarf Jr. Buck (under 6 mo.)
- 325. Netherland Dwarf Jr. Doe (under 6 mo.)
- 326. Mini Rex Sr. Buck (over 6 mo.)
- 327. Mini Rex Sr. Doe (over 6 mo.)
- 328. Mini Rex Jr. Buck (under 6 mo.)
- 329. Mini Rex Jr. Doe (under 6 mo.)
- 330. Other Purebred Class 4 Sr. Buck (over 6 mo.)
- 331. Other Purebred Class 4 Sr. Doe (over 6 mo.)
- 332. Other Purebred Class 4 Jr. Buck (under 6 mo.)
- 333. Other Purebred Class 4 Jr. Doe (under 6 mo.)
- 334. Class 4 Purebred Doe & Litter
- 335. Californian Senior Buck (over 8 mo.)
- 336. Californian Senior Doe (over 8 mo.)
- 337. Californian Intermediate Buck (6 to 8 months)
- 338. Californian Intermediate Doe (6 to 8 months)
- 339. Californian Junior Buck (under 6 mo.)
- 340. Californian Junior Doe (under 6 mo.)
- 341. New Zealand Senior Buck (over 8 mo.)
- 342. New Zealand Senior Doe (over 8 mo.)



- 343. New Zealand Intermediate Buck (6 to 8 months)
- 344. New Zealand Intermediate Doe (6 to 8 months)
- 345. New Zealand Junior Buck (under 6 mo.)
- 346. New Zealand Junior Doe (under 6 mo.)
- 347. Other Purebred Class 6 Sr. Buck (over 8 mo.)
- 348. Other Purebred Class 6 Sr. Doe (over 8 mo.)
- 349. Other Purebred Class 6 Intermediate Buck (6 to 8 months)
- 350. Other Purebred Class 6 Intermediate Doe (6 to 8 months)
- 351. Other Purebred Class 6 Jr. Buck (under 6 mo.)
- 352. Other Purebred Class 6 Jr. Doe (under 6 mo.)
- 353. Class 6 Purebred Doe & Litter
- 354. Crossbred Bucks
- 355. Crossbred Does
- 356. Crossbred Doe and Litter

Market Classes

- 357. Market Meat Pen
- 358. Market Roaster
- 359. Market Fryer



Williams County Junior Fair - Department 400 - Dairy

Show
Superintendent
Alex Baker
419-519-2499

TUESDAY - Sept. 13th
9:00 AM
Show Pavilion

No District 10 Black/White Showmanship Award Premiums

Dairy Breeding Classes: A - \$10.00; B - \$8.00; C - \$6.00
Showmanship: A - \$3.00; B - \$2.00; C - \$1.00

Department #400-Junior Fair Dairy

Exhibitor Rules & Regulations

Please also read complete Junior Fair Rules & Department Rules.

1. Animal ID papers are required to be turned into OSU Extension office by June 1st.
2. If exhibitor or parent does not own the animal, a lease agreement must be on file at the OSU Extension office by June 1st.
3. All animals must be halter broken to lead and double tied with neck strap and halter.
4. All animals should be purebred.
5. Exhibitors are limited to 2 entries in each class.
6. Entries will be judged on type only.
7. No tampering to udders.
8. Clean, neat appropriate clothing including white shirt, any color pants and hard soled shoes or boots are expected.
9. Each age category heifer and cow in a breed will compete for breed champion.
10. Each age category heifer will compete for Champion Heifer All Breeds.
11. Each age category cow will compete for Champion Cow all Breeds.
12. The Champion All Breeds and Champion Cow all Breeds will compete for Grand and Reserve Champion Dairy project. These winners will sell as the Champion and Reserve Champion dairy project.

Age Classification

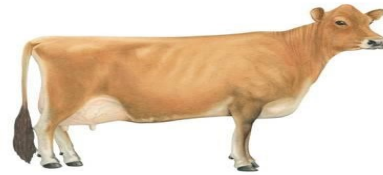
- Spring Heifer Calf, born on or after March 1st, and over 4 months of age of current year.
- Winter Heifer Calf, born Dec. 1st, last year through Feb. 28th, of current year.
- Fall Heifer Calf, born Sept. 1st, last year through Nov. 30th, last year.
- Summer Yearling Heifer, born June 1st, last year through August 31st, last year
- Spring Yearling Heifer, born March 1st, last year through May 31st, last year.
- Winter Yearling Heifer, born December 1st, through February 28th, last year.
- Fall Yearling Heifer, born Sept. 1st, through November 30th, two years ago.
- Spring Two Year Old Cow, born March 1st, through Aug. 31st, two years ago.
- Fall Two Year Old Cow, born Sept. 1st, through Feb. 28th, two years ago.
- Three Year Old Cow, born Sept. 1st, through Aug. 31st, three years ago.
- Four Year Old Cow, born Sept. 1st, through Aug. 31st, four years ago.
- Aged Cow, Five Years Old and Over, born before Sept. 1st, five years ago.



DEPARTMENT 400 - DAIRY (cont.)**Department-400/ Section- DC/ Class**

- 400. Senior Showmanship (15-18)
- 401. Intermediate Showmanship (12-14)
- 402. Junior Showmanship (8-11)
- 403. First Year Showmanship (8-18)
- 404. Showman of Showmen
- 405. Pee Wee Showmanship
- 406. Brown Swiss Spring Calf
- 407. Holstein Spring Calf
- 408. Jersey Spring Calf
- 409. Other Spring Calf
- 410. Brown Swiss Winter Calf
- 411. Holstein Winter Calf
- 412. Jersey Winter Calf
- 413. Other Winter Calf
- 414. Brown Swiss Fall Calf
- 415. Holstein Fall Calf
- 416. Jersey Fall Calf
- 417. Other Fall Calf
- 418. Brown Swiss Summer Yearling
- 419. Holstein Summer Yearling
- 420. Jersey Summer Yearling
- 421. Other Summer Yearling
- 422. Brown Swiss Spring Yearling
- 423. Holstein Spring Yearling
- 424. Jersey Spring Yearling
- 425. Other Spring Yearling
- 426. Brown Swiss Winter Yearling
- 427. Holstein Winter Yearling
- 428. Jersey Winter Yearling
- 429. Other Winter Yearling
- 430. Brown Swiss Fall Yearling
- 431. Holstein Fall Yearling
- 432. Jersey Fall Yearling
- 433. Other Fall Yearling
- 434. Brown Swiss Jr. 2 Yr. Old Cow
- 435. Holstein Jr. 2 Yr. Old Cow
- 436. Jersey Jr. 2 Yr. Old Cow
- 437. Other Jr. 2 Yr. Old Cow
- 438. Brown Swiss Sr. 2 Yr. Old Cow
- 439. Holstein Sr. 2 Yr. Old Cow
- 440. Jersey Sr. 2 Yr. Old Cow
- 441. Other Sr. 2 Yr. Old Cow
- 442. Brown Swiss 3 Yr. Old Cow
- 443. Holstein 3 Yr. Old Cow
- 444. Jersey 3 Yr. Old Cow
- 445. Other 3 Yr. Old Cow

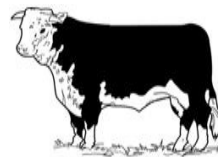
- 446. Brown Swiss 4 Yr. Old Cow
- 447. Holstein 4 Yr. Old Cow
- 448. Jersey 4 Yr. Old Cow
- 449. Other 4 Yr. Old Cow
- 450. Brown Swiss Aged Cow
- 451. Holstein Age Cow
- 452. Jersey Aged Cow
- 453. Other Aged Cow



Williams County Junior Fair - Department 500 - Beef

Show
Superintendent
Alex Baker
419-519-2499

Monday - Sept. 12th
2:30 PM
Show Pavilion



Premiums

Market Classes: A - \$4.00, B - \$3.00, C - \$2.00

Breeding Classes: A - \$10.00, B - \$8.00, C - \$6.00

Showmanship: A - \$3.00; B - \$2.00; C - \$1.00

Dept. #500-Junior Fair Beef Exhibitor

Rules & Regulations

Please also read complete Junior Fair Rules & Department Rules.

1. All animals must be halter broken to lead and double tied with neck strap and halter.
2. Show halters, show sticks, combs and brushes are required.
3. Exhibitors are limited to 2 entries per class.
4. Male market animals must be castrated and healed by official tagging date for that animal. According to the Ohio Code of Ethics, it is unacceptable to castrate cattle over 8 months of age.

Market Classes

(Includes beef and dairy steer and feeder classes)

1. 4-H members must be enrolled in 117M to exhibit a market steer (beef or dairy); 117BF to exhibit a beef feeder; 117DF to exhibit a dairy beef feeder. FFA members must be enrolled in their FFA beef project.
2. All Market Steers/heifers must be in the care of the member by January 1st and ear tagged by the Senior Fair Board on specified dates before January 15th of current year. Dairy beef feeder calves and beef feeder calves must be in possession by June 1st of current year and tagged by the specified date.
3. Families can tag up to 5 market animals per project-per youth. The animals will be tagged under all youth's names that are active 4-H/FFA members. Animals may still be tagged under individuals as well. Exhibitors planning to exhibit a market beef steer at the Ohio State Fair must register the animal under an individual name. This individual will retain possession of the market beef steer throughout all exhibits for the current year.
4. All feeder calves are required to be wormed and vaccinated for BVD, IBR, PI3, BRSV, PH (Pasteurella Hemolytica), by August 15th. Certificate of vaccination must be turned in along with DUNF upon weigh-in at the fair.
5. Animals may be purebred or crossbred. Dairy market projects must be comprised of 100 percent dairy breeds. Any Dairy—Beef crossbreds will show in the Beef classes
6. Steers must be a minimum of 950 pounds to be sold in the Junior Fair Sale.
7. Feeder calves must weigh between 300 to 650 pounds to be eligible for the Junior Fair Sale.
8. Animals over or under the required weight will be shown in a separate class and can still participate in Showmanship. All animals go through the scales once. No re-weighs.
9. Following weigh-in at the fair, market animals will be divided into uniform weight classes.
10. Beef Heifer Feeder Calves or market dairy/beef heifer cannot be exhibited in breeding classes.

Breeding Classes

1. 4-H members must be enrolled in 117B Beef Breeding to exhibit in the breeding classes. FFA members must be enrolled in their FFA beef project.
2. All breeding animals will be shown by age. Refer to the following dates to determine age of animal.

DEPARTMENT 500 - BEEF (cont.)**Beef Age Classification**

- A Spring Calf must have been calved on or after March 1st of current year.
- A Junior Calf must have been calved between Jan. 1st and Feb. 28th of current year.
- A Winter Calf must have been calved between Nov. 1st and Dec. 31st, last year.
- A Senior Calf must have been calved between Sept. 1st and Oct. 31st, last year.
- A Late Summer Calf must have been calved between July 1st and Aug. 31st, last year.
- An Early Summer Calf must have been calved between May 1st and June 30th, last year.
- A Spring Yearling must have been calved between March 1st and April 30th last year.
- A Junior Yearling must have been calved between Jan. 1st and Feb. 28th, last year.
- A Senior Yearling must have been calved between Sept. 1st and Dec. 31st, 2 years ago.
- A Two Year Old must have been calved between Jan. 1st and Aug. 31st, two years ago.
- An Aged Cow, born prior to Jan. 1st, two years ago, with calf born within past 12 months.

Department- 500/ Section- BC/ Classes

- 501. Senior Showmanship (age 15-18)
- 502. Intermediate Showmanship (age 12-14)
- 503. Junior Showmanship (age 8-11)
- 504. First Year Showmanship (age 8-18)
- 505. Showman of Showmen
- 506. Pee Wee Showmanship

Breeding Classes

- 507. Spring Calf
- 508. Junior Calf
- 509. Winter Calf
- 510. Senior Calf
- 511. Late Summer Calf
- 512. Early Summer Calf
- 513. Spring Yearling
- 514. Junior Yearling
- 515. Senior Yearling
- 516. 2 Yrs. Old
- 517. Aged Cow

Market Classes

- 518. Dairy Feeders
- 519. Beef Feeders
- 520. Market Dairy
- 521. Market Beef



Williams County Junior Fair - Department 600 - Sheep

Show
Superintendent
Pam Goll
419-553-0778

Monday - Sept. 12th
8:30 AM
Show Pavilion



Premiums:

Breeding:

A-\$7.00 B-\$6.00 C-\$5.00

Market:

A-\$4.00 B-\$3.00 C-\$2.00

Showmanship:

A-\$3.00 B-\$2.00 C-\$1.00

Department- 600

Section- SH/ Class

600. Senior Showmanship

(age 15-18)

601. Intermediate Showmanship

(age 12-14)

602. Junior Showmanship

(age 8-11)

603. First Year Showmanship

(age 8-18)

604. Showman of Showmen

605. Pee Wee Showmanship

(Cloverbuds)

606. Ewe Lamb

607. Yearling Ewe

608. Ram Lamb

609. Yearling Ram

610. Pair of Market Lambs

611. Single Market Lamb

612. Single Market
Lamb County Born



Department #600 Junior Fair Sheep

Exhibitor Rules & Regulations

A. Rules and Regulations

Please also read complete Junior Fair Rules & Department Rules.

1. All female and intact male sheep must have the official USDA scrapie Id tag affixed to the ear at fair check in. Animals without this official tag will not be allowed to enter the fairgrounds or compete at the Williams County Fair.

Breeding Classes

1. Exhibitors are limited to two entries per breeding class.

2. Breeding animals will be shown by age.

3. A Grand Champion Ewe and a Grand Champion Ram will be awarded. The first place lamb and yearling of each sex will compete for the respective Grand Champion.

Market Classes

1. All market lambs are to be born after January 1st of the current year of show.

2. All market lambs must be brought to the Williams County Fairgrounds to be tagged on the date designated in June. Families can tag up to 5 market sheep per youth-the animals will be tagged under all youths' names that are active 4-H/FFA members. Animals may still be tagged under individuals as well.

3. Exhibitors may enter a maximum of two market lambs and one pair of market lambs in the show. All market lambs must be wether or ewe lambs.

4. All market lambs must be slick shorn within two weeks of the fair. All wool must be a uniform length of no more than 1/4 inch.

5. Market lambs must have a minimum weight of 90 pounds to sell in the Junior Fair Sale. Animals not meeting the required weight will be shown in a separate class and can still participate in Showmanship. All animals go through the scales once. No re-weighs.

6. Single market lambs born and raised in Williams County may be entered in the born and raised class. A Williams County Born and Raised Market Lamb entry form must be completed and turned into the Williams County OSU Extension office by July 1st. If entry form is not received by specified date, animal (s) will be entered in the traditional market lamb class.

7. The Champion and Reserve Champion Market Lambs will compete with the Champion and Reserve Champion County Born Market Lambs to select one Grand Champion and one Reserve Grand Champion Market Lamb.

Williams County Junior Fair - Department 700 - Goat

Show
Superintendent
Matt Kennedy
419-630-3978

Saturday - Sept. 10th
9:00 AM
Show Pavilion



Premiums

Breeding Classes: A-\$7.00 B- \$6.00 C- \$5.00

Market Classes: A-\$4.00 B- \$3.00 C-\$2.00

Showmanship: A-\$3.00 B-\$2.00 C-\$1.00

Department #700-Junior Fair Goat

Exhibitor Rules & Regulations

1. 4-H members must be enrolled in the correct project to exhibit in specific classes. FFA members must be enrolled in the goat project. A separate animal must be used for each class with the exception of the Doe & Daughter and pack/harness classes.
2. All goats must have the official USDA scrapie ID tag affixed to the ear or tattooed into the ear or tail at Fair check-in. Registration papers in conjunction with the appropriate tattoo placed into the ear or tail will be accepted in lieu of an official USDA Scrapie ID #. Animals without this official tag will not be allowed to enter the fairgrounds or compete at the Williams County Fair.
3. Drug Use Notification Form is required for all market and lactating goats.
4. No horned goats are allowed on fairgrounds (with the exception of Angora and Boer Breeding Doe). If in a dehorned goat, there is re-growth of horn (movable scurs LESS THAN 1/2") which resembles a horn/horns that animal will be evaluated by the official fair veterinarian for entry.
5. All market goats will go to slaughter. Market goats may be does or wethers, but a doe shown in the market class cannot show in any other class.
6. Limit of two entries in each class.

7. Show attire: Collared shirt with long pants (no logos, wording, "bling", shorts or capris, matching belt and shoes (no open toes) in black or brown.
8. Goats presented for exhibition must show no evidence of caseous lymphadenitis (superficial abscesses), contagious ecthyma (sore mouth), foot rot, or any other contagious or infectious disease. These goats are not to be unloaded and cannot be shown.
9. NO BUCKS (intact male) GOATS ALLOWED.

Breeding Classes

1. All goat breeds will be shown by age, in their respective areas (Dairy, Meat, Pygmy and Angora).
2. Doe & daughter pairs must be shown in their respective individual classes as well.
3. Only one Pygmy or Angora Showmanship class will be conducted if under five participants.

Market Goats

1. All market goats must be weighed on the designated date in June. Families can tag up to 5 market goats (meat and dairy) per youth. The animals will be tagged under all youths' names that are active 4-H/FFA members. Animals may still be tagged under individuals as well.
2. Market goats are to be born between Jan. 1st and April 30th of current year.
3. Market goats must weigh a minimum of 50 pounds to be sold in the Junior Fair Sale. Animals not meeting the required weight will be shown in a separate class and can still participate in Showmanship. All animals go through the scales once. No re-weighs.
4. Market goats with any percentage of Meat Goat ancestry (Boer, Kiko, Spanish, etc.) will be required to show in a Meat Market class. There will be a Grand Champion and Reserve Grand Champion Meat Market Goat and a Grand Champion and Reserve Grand Champion Dairy Market Goat.

DEPARTMENT 700 - GOAT (cont.)**Harness Goats**

1. Harness 1st year--will be halter broken and led with a lead strap. Animals should respond to voice commands of "stop", "go", and "back".
2. Harness 2nd year--will be harnessed and pull an empty cart. Animals should respond to voice commands of "stop, go, and back."
3. Harness 3rd year--will be harnessed and pull a child-driven cart. Animals must respond to the commands of stop, go, back, left and right" while pulling the cart through an obstacle course.
4. The same animal may be used for harness and pack classes only. Harness and pack animals cannot be exhibited as market or breeding animals.

Pack Goats

1. Pack 1st year-- must be halter broken and lead with a lead strap.
2. Pack 2nd year—must be halter broken, lead with a lead strap and carry an empty pack.
3. Pack 3rd year—must be halter broken, lead with a lead strap, and carry a loaded pack of at least 25% of the goat's weight.
4. The same animal may be used for harness and pack classes only. Harness and pack animals cannot be exhibited as market or breeding animals.

Department 700/Section GO/Class

- 700.Senior Showmanship (age 15-18)
- 701.Intermediate Showmanship (12-14)
- 702.Junior Showmanship (8-11)
- 703.First Year Showmanship (8-18)
- 704.Showman of Showmen
- 705.Pee Wee Showmanship

PYGMY GOATS

- 706.Pygmy Doe Kid- born after Jan. 1 of current year.
- 707.Pygmy Doe-under 3 years
- 708.Pygmy Doe-over 3 years

709.Pygmy Wether Kid- born after Jan. 1 of current year.

710.Pygmy Wether Senior - Born before Jan. 1 of current year.

DAIRY GOATS

711.Does, Junior Kid- born after April 1 of current year.

712.Does, Intermediate Kid- born March 1-March 31 of current year

713.Does, Senior Kid- born Jan. 1 to last day of February of current year.

714.Does, Senior Yearling- 12 months & under 24 months old, not in milk.

715.Does, under 2 years old in milk.

716.Does, 2 years old and under 3 years.

717.Does, 3 years old and under 5 years.

718.Does, 5 years old and over.

719.Doe and Daughter

MEAT GOATS

720. Meat Doe-under 1 year old

721. Meat Doe-over 1 yrs. old and under 3 yrs. old

722. Meat Doe-over 3 yrs. old and under 5 yrs. old

723. Meat Doe-over 5 yrs. old

PACK AND HARNESS GOATS

724. Pack Kid - Born after Jan. 1 of current year.

725. Pack Yearling - Under 24 months of age.

726. Pack Senior

727. Harness Kid - Born after Jan. 1 of current year.

728. Harness Yearling - Under 24 months of age.

729. Harness Senior

ANGORA GOATS

730. Doe, Kid-born after Jan. 1 of current year

731. Doe, Yearling-under 24 month of age

732. Doe & Kid

MARKET GOATS

733. Dairy Market Goat

734. Meat-Type Market Goat



Williams County Junior Fair - Department 800 - Swine

Show
Superintendent
Joe Winebrenner
419-518-0073

**Sunday - Sept. 11th
9:00 AM
Show Pavilion**



Premiums

Market:
A-\$4.00 B-\$3.00 C-\$2.00
Showmanship:
A-\$3.00 B-\$2.00 C-\$1.00

Department #800 Junior Fair Swine Exhibitor Rules & Regulations

Please also read complete Junior Fair Rules & Department Rules.

1. All youth exhibiting swine must be National Pork Producers Council Level III Pork Quality Assurance verified.
2. Jr. Fair swine show is a TERMINAL SHOW. No swine can return home after the fair. Animals must be sold or custom processed directly from the fair.

Market Classes

1. Market swine ID forms are due to Extension Office no later than June 1st. Families can ID up to 5 market swine per youth-the animals can be ID'd under all youths' names that are active 4-H/FFA members. Animals may still be ID'd under individuals as well.
2. Animals entered as purebred market hogs must supply proof of registration to Extension Office by July 1st.
3. An exhibitor may enter a maximum of three market singles and one market pair in the swine show. Exhibitors can exhibit no more than two purebred or two crossbred market singles, but cannot exceed 3 market singles. Market animals (singles or pairs) may be barrows or gilts.
4. All male market animals should be castrated and healed by fair. According to the Ohio Code of Ethics it is unacceptable to castrate swine over seventy-five pounds.
5. All market animals must have a measurable 1/2" of body hair, underline included. Ears and tail may be a shorter length.
6. All hogs must have a minimum weight of 220 pounds to sell in the Junior Fair Sale. Upon arrival at the swine barn, all animals go through the scales once, no reweighs.
7. Crossbred market animals will be uniformly divided into weight divisions for show after weigh-in. First place single market hog from each weight division will compete for Grand Champion Single Market Hog. Reserve Grand Champion will be selected from the remaining first place animals and the respective second place animal from the Grand Champion class. Grand and Reserve Grand Champion Market Pair will be selected using the same process.
8. Awards will be: 1st Place (Scramble, Purebred(s), each weight division) Market Hog; 2nd Place (Scramble, Purebred(s), each weight division) Market Hog; Grand Champion Single Crossbred Market Hog; Reserve Grand Champion Single Crossbred Market Hog; Grand Champion Market Pair; Reserve Champion Market Pair.
9. Market hogs that are designated as being sold direct (not sold through the sale ring) will be marked 24 hours before shipment. It is the responsibility of the exhibitor to make sure the correct animal is marked. Due to possible health issues, once an animal leaves the fairgrounds, it cannot return.

A special thanks to our fair friend - Dr. Pete Bowen for being our 2022 Fair Veterinarian.

Swine Department- 800

Section- SW/ Class

- 800.Senior Showmanship (age 15-18)
- 801.Intermediate Showmanship (age 12-14)
- 802.Junior Showmanship (age 8-11)
- 803.First Year Showmanship (age 8-18)
- 804.Showman of Showmen
- 805.Pee Wee Showmanship
- 806.Pair Market Hogs
- 807.Scramble Pig
- 808.Berkshire Single Market Hog
- 809.Chester White Single Market Hog
- 810.Duroc Single Market Hog
- 811.Hampshire Single Market Hog
- 812.Hereford Single Market Hog
- 813.Landrace Single Market Hog
- 814.Poland China Single Market Hog
- 815.Spotted Single Market Hog
- 816.Tamworth Single Market Hog
- 817.Yorkshire Single Market Hog
- 818.Crossbred Single Market

Williams County Junior Fair - Department 900 Horse

Show
Superintendent
Pam Goll
419-553-0778

Sunday - Sept. 11th
9:00 AM
Horse Arena



Premiums

All Equine Classes: A -\$4.00 B -\$3.50 C -\$3.00

Department #900 Junior Fair Horse Exhibitor Rules & Regulations

A. Rules and Regulations

1. Equine Identification Form must be on file by June 1st, with the OSU Extension Office. If equine ID forms and vaccination forms are not turned in by specified dates, the named equine is ineligible for Ohio State Fair (PAS) and the Williams County Fair.
2. All equine exhibitors must attend a minimum of one Williams County Quality Assurance to be eligible to participate at the Williams County Fair. Also all required films, forms, etc. must be completed.
3. All equine that will be exhibited at the Williams County Fair must be vaccinated for Eastern and Western Encephalitis, Influenza, Herpes/Rhino, West Nile, and Tetanus. All exhibitors must sign and turn in required vaccination form stating that the vaccines were administered to the equine by the first Thursday in June (official Williams County Horse and Pony measurement date).
4. All equine must be measured on the official county horse measuring date if the animal is 5 years old and younger, or has never received an official height measurement for the Williams County Fair. The exception is that if an equine measure 58 inches or above any time before age 5, a measurement is not required. All measurements are final. Pony height is 58-inches or less. Horse height is anything over 58-inches.
5. Uniform Rules for 4-H Horse Shows, except grouping of classes, will be the official guidelines.
6. All youth age 19 and under, participating in any 4-H equestrian activity, are required to wear properly fitted protective headgear which meets or exceeds current ASTM (American Society for Testing and Materials)/SEI (Safety Equipment Institute) standards with the chin harness securely fastened at all times while riding or driving an equine on the Williams County Fairgrounds. It is the responsibility of the rider, or the parent/guardian of the youth participant, to make sure that the headgear worn complied with appropriate safety standards for protective headgear intended for equestrian use, and is properly fitted and in good condition. The Ohio 4-H Horse Program, show committees, officials, Extension personnel and volunteer leaders are not responsible for checking headgear worn for such compliance. The Ohio 4-H Horse Program, show committees, officials, Extension personnel and volunteer leaders make no representation or warranty, expressed or implied, about any protective headgear and cautions riders that death or serious injury may result despite wearing such headgear, as no helmet can protect against all foreseeable injuries in equestrian activities. The Ohio 4-H Horse Program, show committees, officials, Extension personnel and volunteer leaders may, at his/her discretion, check a participant's protective headgear for proper standards. If the youth is found to be wearing unapproved defective or improperly fitting headgear, he/she is not permitted to participate in riding or driving activities until proper headgear is acquired.
7. A member may exhibit two horses or ponies and one single harness horse.
8. Premiums will be paid on the top four grades per animal. Each exhibitor may only enter one horse/pony per class. One horse, one rider-no animal sharing. No entries added to classes after entry forms are turned in at Livestock Interviews.
9. When the winner of the Draft Horse Showmanship is age 15-18, an Overall Sr. Showmanship winner will be selected by the judge to represent the horse department in the Showmanship Sweepstakes. The Gymkhana Showmanship class will be held prior to the Gymkhana classes and is open to Gymkhana participants to complete the showmanship requirement.

DEPARTMENT 900 - HORSE (cont.)

Participants in this class will not be eligible for Showman of Showmen or to represent the Horse Department in Showmanship Sweepstakes. Only ribbons will be awarded for Gymkhana showmanship class only. Only participants in Saturday's showmanship classes are eligible for Showman of Showmen and Sweepstakes. If showmanship is not entered or is scratched at a later date, that individual will not participate in any classes.

10. Junior (Jr.) ages are 8-13 and Senior (Sr.) ages are 14-18 (as of Jan. 1st of current year), except for showmanship classes.

11. First year members can enter First Year Showmanship and either First Year Walk and Trot or the canter and contesting classes.

12. Animals must be stabled in facilities provided by the Fair Board. No padlocks on stalls. Mares with foals, mares in foal, weanlings, and yearlings will have first choice of box stalls. One (1) stall per exhibitor with the exception; 1) an exhibitor that also shows a draft animal 2) an exhibitor w/mare and un-weaned foal. Draft horses will be stalled in the Draft Horse Barn. All additional animals will be hauled in on day of show.

13. When a member exhibits at the county fair, the horse must stay for the entire fair, or forfeit all trophies and premiums. Exception being that a medical release must be signed by the fair veterinarian and the Senior Fair Board Superintendent. Mares with foals have the option of taking project home after the show.

Department-900/Section HP/Classes

- 900. Senior Showmanship (age 15-18)
- 901. Intermediate Showmanship (age 12-14)
- 902. Junior Showmanship (age 8-11)
- 903. First Year Showmanship (age 8-18)
- 904. Draft Showmanship 8-18
- 905. Showman of Showmen
- 906. Pew Wee Showmanship
- 907. English Equitation
- 908. English Pleasure
- 909. First Year Walk and Trot Horsemanship
- 910. Horse Senior Horsemanship
- 911. Horse Junior Horsemanship
- 912. Pony Senior Horsemanship
- 913. Pony Junior Horsemanship
- 914. Ranch Horsemanship
- 915. Horse Senior Western Pleasure
- 916. Horse Junior Western Pleasure
- 917. Pony Senior Western Pleasure
- 918. Pony Junior Western Pleasure
- 919. Ranch Pleasure
- 920. First Year Walk/Trot Pleasure
- 921. In Hand Trail
- 922. Trail class
- 923. Trail class-First Year Member Walk-trot
- 924. Western Riding
- 925. Reining
- 926. Gymkhana Showmanship (ribbons only)
- 927. Horse Barrels

- 928. Pony Barrels
- 929. 1st Year Walk/Trot Barrels
- 930. Horse Flags
- 931. Pony Flags
- 932. 1st Year Walk/Trot Flags
- 933. Horse Cones & Barrels
- 934. Pony Cones & Barrels
- 935. Horse Pole Bending
- 936. Pony Pole Bending
- 937. 1st Year Walk/Trot Pole Bending
- 938. Horse Stake Race
- 939. Pony Stake Race
- 940. Horse Keyhole
- 941. Pony Keyhole
- 942. 1st Year Walk/Trot Keyhole
- 943. Horse Speed & Control
- 944. Pony Speed & Control

Williams County Junior Fair Schedule of Events

FRIDAY - 9/9/22

Move - In - Day

Animals MUST be weighed in upon arrival to the fairgrounds. No exceptions.

Beef/Sheep/Goats - weighed at the show pavilion.

Swine - weighed at the swine barn (unload in the wash rack)

Poultry/Rabbits - weighed in at the rabbit barn.

DUNF Forms must be completed electronically.

TUESDAY - 9/13/22

9:00 AM Dairy Show - Show Pavilion

6:30 PM Animal & Me Program - Show Pavilion

WEDNESDAY - 9/14/22

4:30 PM Showmanship Sweepstakes
Show Pavilion & Horse Arena

THURSDAY - 9/15/22

9:00 AM Livestock Sale—Show Pavilion

Barn Superintendents

In each of the barns the Superintendent for the species is listed. If you have questions or concerns on move in day, please be sure to contact the Superintendent of the Barn. Hours of effort has been put into organizing and set-up by the Junior Fair Board members....please respect that.

SATURDAY - 9/10/22

8:00 AM Opening Ceremony - Show Pavilion

9:00 AM Goat Show - Show Pavilion

10:00 AM FFA Projects in place at the Gillette

1:00 PM Poultry Show - Poultry Barn

SUNDAY - 9/11/22

8:00 AM Church Service - Show Pavilion

9:00 AM Swine Show - Show Pavilion

9:00 AM Horse Show - Horse Arena

MONDAY - 9/12/22

8:30 AM Sheep Show - Show Pavilion

9:00 AM Rabbit Show—Rabbit Barn

2:30 PM Beef Show - Show Pavilion

3:00 PM Jr. Horse Team Show - Horse Arena

On behalf of the Directors of the Williams County Agricultural Society, THANK YOU. We extend our sincere appreciation to our Williams County Extension Office, 4H Advisory Council, 4H & FFA Advisors, the exhibitors, the parents, the mentors, the volunteers and our very own Williams County Junior Fair Board members for everything all of you do to support the 4H and FFA programs and the WILLIAMS COUNTY FAIR! We are very humbled and grateful to serve all of you!

Williams County Senior Fair Schedule of Events

FRIDAY - 9/9/22

Senior Fair and still exhibits received in the Gillette Building from 8:00 AM until 7:00 PM. New for 2022 All exhibitors (with exception to Floriculture exhibits) must pay an entry fee of \$1.00 per entry with the entry form.

SATURDAY - 9/10/22

Veterans Day 9AM to 9PM

9:00 AM Flag Raising Ceremonies - Infield
 12:00 PM Flower Show Judging - Gillette Bldg.
 2:00 PM Horticulture Judging - Gillette Bldg.
 5:00 PM King & Queen Coronation
 Midway Stage
 6:00 PM Demolition Derby—Grandstands
 6:00 pm Callunaw Rednecks—Midway Stage

SUNDAY - 9/11/22

4:00 PM Kids Fishing Derby - Pond
 5:00 PM Truck Pulls—Grandstand
 6:00 pm Electrik Circus - Midway Stage

MONDAY - 9/12/22

Kids Day 9AM to 3PM

9 to 3 PM Kids Day Events - See Fair Book
 5:30 PM Kids Bike Giveaway - Free Stage
 7:00 PM High School Band Show - Grandstands
 7:00 PM Renegade Lemonade @ Midway Stage

TUESDAY - 9/13/22

Senior & Disability Day 9AM to 3PM

6:00 PM Cheer Off Competition - Grandstands
 7:00 PM Weekend Warriors—Midway Stage

WEDNESDAY - 9/14/22

12:00 PM Show 2 Flower Show Judging -
 Gillette Building
 1:00 PM Harness Racing - Grandstands
 7:00 PM HayFire—Midway Stage
 7:00 PM Pig Scramble—Grandstands

THURSDAY - 9/15/22

7:00 PM Rodeo—Grandstands
 7:00 PM Out of the Blue—Midway Stage

NEW IN 2022

RIDE WRIST BANDS
 ALL DAY, EVERY DAY

!!!DAILY RIDE WRISTBANDS \$25!!!

!!!KID'S DAY SPECIAL PRICE \$17!!!

Williams County Senior Fair Gillette & Still Exhibits - Book 8

HORTICULTURE DIVISION

Superintendent: Danyel
Wortkoetter
Asst. Superintendent: Scott Car-
roll
Committee: Chad Carroll



Send in your entries early and avoid the lines and time waiting. In making entries use book, class, lot, description.

Division Rules

1. Entries will be accepted Friday Sept. 9th from 8:00 am to 8:00 pm. All exhibits MUST be in place by 12:00 pm Sat. Sept. 10th. Judging @ 2pm.
2. Each entry can be listed in one category only.
3. Exhibits in this department are open to all counties and states with fairs that are open to Williams County.
4. To make entry to any class in the Horticulture Division you must pay \$1.00 per entry.
5. All entries must have been canned in current season.
6. Standard pints and quart jars and standard jelly glasses must be used. Any other jars will be disqualified.
7. Vegetables and other entries will be judged by one Judge system and are open to the public.
8. Display exhibits cannot be entered for single exhibits.
9. Exhibitors are limited to two entries per premium.
10. Exhibitors shall correctly name, on ticket, the entry as to variety.
11. Premiums will be mailed the first business day after the annual fair.
12. Exhibits will be released from 4pm until 8 pm on Friday the 16th of September.
13. All exhibits MUST be removed. If not removed by 8 pm on Fri. 9/16, exhibits will be disposed of.
14. The Williams County Agricultural Society is not responsible for theft or loss.

Ernie Ricks Corn Contest

Sponsored by United Producers, Inc.

Variety Premiums: 1st -\$5; 2nd -\$3

1. Any grower may exhibit two piles of corn and must have 10 ears of each variety.

2. Each variety will be judged

3. First place winner from each variety will be entered in the Ernie Ricks Corn Sweepstakes. CORN MUST BE GROWN IN 2021.

Class 1 (10 Ears Corn)

- 8 1 100 Northrup King
- 8 1 101 Stewart
- 8 1 102 Pioneer hybrid
- 8 1 103 Rupp seed
- 8 1 104 DeKalb
- 8 1 105 Golden Harvest
- 8 1 106 Specialty
- 8 1 107 Seed Consultants
- 8 1 108 Brodbeck's
- 8 1 109 Select Seed
- 8 1 110 Garst
- 8 1 111 Becks
- 8 1 112 Any others

Ernie Ricks Corn Sweepstakes places

Premiums: 1st \$25.00; 2nd \$20.00; 3rd \$15.00; 4th \$10.00; 5th \$5.00

- 8 1 114 1st Place:
- 8 1 115 2nd Place:
- 8 1 116 3rd Place:
- 8 1 117 4th Place:
- 8 1 118 5th Place:

Class 2 -Agricultural Oddities

Premiums: 1st -\$3.00, 2-\$2.00, 3-\$1.00 unless stated different. All entries must have exhibitor's name, the variety, the count or measurements on the ticket attached.

- 8 2 200 Tallest stalk of corn with ear, WITHOUT roots
- 8 2 201 Tallest sunflower stalk, WITHOUT roots
- 8 2 202 Single longest ear
- 8 2 203 Single biggest ear around
- 8 2 204 Single heaviest ear by weight
- 8 2 205 Soybean plant with most pods.

NO TAPED-ON BRANCHES. COUNT MUST BE ON TAG.

- 8 2 206 Any odd growth on any vegetable
- 8 2 207 Decorated oddities
- 8 2 208 Largest diameter Sunflower head
- 8 2 209 Heaviest sunflower head
- 8 2 210 Scarecrow \$5.00 \$3.00 \$2.00

BOOK 8 - HORTICULTURE (cont.)**Hay Rules:**

Premiums: 1st -\$3.00, 2nd -\$2.00, 3rd -\$1.00.

1. One slice square baled hay neatly tied.
2. Must be this year's hay and grown by exhibitor.
3. Limit one entry per class.

8 2 213 Hay-Alfalfa

8 2 214 Hay-Clover

8 2 215 Hay-Mixed/ Grass

Class 3 - Popcorn and Sweet Corn

Premium: 1st -\$2.00, 2nd -\$1.00

8 3 300 Popcorn 10 ears, yellow

8 3 301 Popcorn 10 ears, white

8 3 302 Popcorn 10 ears, strawberry

8 3 303 Popcorn 10 ears, Tom Thumb

8 3 304 Popcorn 10 ears, any other variety

8 3 305 Sweet corn, 6 ears, yellow

8 3 306 Sweet corn, 6 ears, white

8 3 307 Sweet corn, 6 ears, bi-color

8 3 308 6 ears of Indian corn

Class 4 - Grains and Honey

Premiums: 1st -\$3.00, 2nd -\$2.00, 3rd -\$1.00

8 4 400 Wheat, any variety (1qt glass jar)

8 4 401 Oats, any named variety (1qt glass jar)

8 4 402 Soybeans, any named variety (1qt glass jar)

8 4 403 Alfalfa (1qt glass jar)

8 4 404 Timothy

8 4 405 Mammoth

8 4 406 Red Clover

8 4 407 Any other (named)

Honey

Premiums: 1st -\$5.00, 2nd -\$3.00, 3rd -\$2.00

8 4 408 Comb honey -3 each

8 4 409 Extracted White — 1 lb. Queen line jars, 3ea

8 4 410 Extracted Amber — 1 lb. Queen line jars, 3ea

8 4 411 Extracted Dark — 1 lb. Queen line jars, 3ea

8 4 412 Chunk Honey, 3 jars

8 4 413 Extracting Frame of Honey any size

8 4 414 Beeswax 3lbs minimum

8 4 415 Beeswax candles dipped, 1 pr.

8 4 416 Beeswax candles molded, 1 pr.

8 4 417 Beeswax candles made with bees wax foundation, 1 pair

8 4 418 Bees with Queen (observation hive)



8 4 419 Honey Exhibit- must contain education information, 5 jars of honey, comb honey, Bees wax, and any other hive related products (such as candles, Honey candies, pollen, frames of honey, etc.)

\$15.00 \$10.00 \$5.00

Class 5 – Vegetables

Potatoes (5)

8 5 500 Red \$2.00 \$1.00

8 5 500 White \$2.00 \$1.00

8 5 502 Yellow \$2.00 \$1.00

8 5 503 Sweet \$2.00 \$1.00

8 5 504 Any other, named \$2.00 \$1.00

8 5 505 3 largest by weight \$2.00 \$1.00

8 5 506 Heaviest white (1) \$2.00 \$1.00

8 5 507 Largest diameter (1) \$2.00 \$1.00

Red Beets (5)

8 5 508 Baby gladiator \$2.00 \$1.00

8 5 509 Yellow \$2.00 \$1.00

8 5 510 Detroit dark \$2.00 \$1.00

8 5 511 Any other named variety \$2.00 \$1.00

Turnips (5)

8 5 512 Purple top \$2.00 \$1.00

8 5 513 White top \$2.00 \$1.00

Parsnips (5)

8 5 514 Parsnips \$2.00 \$1.00

Carrots (5)

8 5 515 Nantes \$2.00 \$1.00

8 5 516 Danvers half long \$2.00 \$1.00

8 5 517 Red cored chantey \$2.00 \$1.00

8 5 518 Longest \$2.00 \$1.00

8 5 519 Largest around \$2.00 \$1.00

8 5 520 Any Variety \$2.00 \$1.00

Onions (5)

8 5 521 Bermuda, white \$2.00 \$1.00

8 5 522 Sweet Spanish, yellow \$2.00 \$1.00

8 5 523 Red any variety named \$2.00 \$1.00

8 5 524 Multiplier (1 qt. basket) \$2.00 \$1.00

8 5 525 Largest round, named \$2.00 \$1.00

8 5 526 Largest by weight, named \$2.00 \$1.00

Tomatoes (5)

8 5 527 Canning, named \$2.00 \$1.00

8 5 528 Yellow, named \$2.00 \$1.00

8 5 529 Slicers, named \$2.00 \$1.00

8 5 530 Cherry red, 10 named \$2.00 \$1.00

8 5 531 Yellow salad, named \$2.00 \$1.00

8 5 532 Paste, 10 named \$2.00 \$1.00

8 5 533 Largest by weight \$2.00 \$1.00

8 5 534 Any other variety, named \$2.00 \$1.00

Peppers (3)

8 5 535 Large green \$2.00 \$1.00

8 5 536 Large red \$2.00 \$1.00

8 5 537 Large yellow \$2.00 \$1.00

8 5 538 Large purple \$2.00 \$1.00

8 5 539 Any other variety, named \$2.00 \$1.00

BOOK 8 - HORTICULTURE (cont.)**CLASS 5 Vegetables continued****Hot Peppers (5)**

- 8 5 540 Jalapeno \$2.00 \$1.00
- 8 5 541 Hungarian wax \$2.00 \$1.00
- 8 5 542 Habeneros \$2.00 \$1.00
- 8 5 543 Mixed \$2.00 \$1.00
- 8 5 544 Any other variety \$2.00 \$1.00

Cabbage (1 head)

- 8 5 545 Flat dutch \$2.00 \$1.00
- 8 5 546 Red \$2.00 \$1.00
- 8 5 547 Stonehead, named \$2.00 \$1.00
- 8 5 548 Chinese \$2.00 \$1.00
- 8 5 549 Largest by weight \$2.00 \$1.00
- 8 5 550 Any other variety named \$2.00 \$1.00

Cucumbers

- 8 5 551 Slicer (4) \$2.00 \$1.00
- 8 5 552 Pickling (6) \$2.00 \$1.00
- 8 5 553 Any other variety (4) \$2.00 \$1.00

Class 6 Beans, Melons, Squash,**Misc. Beans (Shelled) 1qt jar**

- 8 6 600 Navy or soup \$2.00 \$1.00
- 8 6 601 Red kidney \$2.00 \$1.00
- 8 6 602 Any other variety, named \$2.00 \$1.00

Beans in Pod (10)

- 8 6 603 Purple \$2.00 \$1.00
- 8 6 604 Yellow \$2.00 \$1.00
- 8 6 605 Green \$2.00 \$1.00
- 8 6 606 Lima \$2.00 \$1.00

Melons (one) Must name variety

- 8 6 610 Watermelon \$3.00 \$2.00
- 8 6 611 Watermelon, largest diameter \$3.00 \$2.00
- 8 6 612 Watermelon, largest by weight \$3.00 \$2.00
- 8 6 613 Muskmelon \$3.00 \$2.00
- 8 6 614 Muskmelon, largest by weight \$3.00 \$2.00
- 8 6 615 Honeydew \$3.00 \$2.00
- 8 6 616 Any other named variety \$3.00 \$2.00

PUMPKINS (one)

- 8 6 620 Pie, any variety named \$2.00 \$1.00
- 8 6 621 White \$2.00 \$1.00
- 8 6 622 Any other variety named \$2.00 \$1.00
- 8 6 623 Largest by diameter \$10.00 \$7.00 \$5.00
- 8 6 624 Largest by weight \$10.00 \$7.00 \$5.00

Squash (two) Must name variety

- 8 6 630 Summer yellow \$2.00 \$1.00
- 8 6 631 Scallop, any variety, named \$2.00 \$1.00
- 8 6 633 Zucchini \$2.00 \$1.00
- 8 6 634 Turk's turban \$2.00 \$1.00
- 8 6 635 Hubbard (1) \$2.00 \$1.00
- 8 6 636 Butternut \$2.00 \$1.00
- 8 6 637 Spaghetti \$2.00 \$1.00
- 8 6 638 Cushaw (1) \$2.00 \$1.00
- 8 6 639 Any other variety, named \$2.00 \$1.00

**Miscellaneous - Must name variety**

- 8 6 645 Rutabaga (1) \$2.00 \$1.00
- 8 6 646 Broccoli (3 heads) \$2.00 \$1.00
- 8 6 647 Kohlrabi (3) \$2.00 \$1.00
- 8 6 648 Cauliflower (1 head) \$2.00 \$1.00
- 8 6 649 Brussel sprouts, any variety (8) \$2.00 \$1.00
- 8 6 650 Eggplant (2) \$2.00 \$1.00
- 8 6 651 Radish (plate of any variety) \$2.00 \$1.00
- 8 6 652 Salsify (plate of 6) \$2.00 \$1.00
- 8 6 653 Swiss chard (2 stalks) \$2.00 \$1.00
- 8 6 654 Rhubarb (6 stalks) \$2.00 \$1.00
- 8 6 655 Celery (1 bunch) \$2.00 \$1.00
- 8 6 656 Horseradish (6 roots) \$2.00 \$1.00
- 8 6 657 Dill (3 stalks, fresh) \$2.00 \$1.00
- 8 6 658 Leeks (2) \$2.00 \$1.00
- 8 6 659 Garlic (3) \$2.00 \$1.00
- 8 6 660 Hops (1 plant) \$2.00 \$1.00
- 8 6 661 Zipper Peas (10) \$2.00 \$1.00
- 8 6 662 Okra 5 pods \$2.00 \$1.00
- 8 6 663 Collection of herbs \$2.00 \$1.00
- 8 6 664 Apple gourd (1) \$2.00 \$1.00
- 8 6 665 Basket of gourds, 2013 (fresh assorted with stems attached) \$2.00 \$1.00
- 8 6 666 Basket of gourds, dried \$2.00 \$1.00
- 8 6 667 Display a peck market basket of home grown garden produce. Filler allowed \$5.00 \$3.00
- 8 6 668 Anything not listed \$2.00 \$1.00
- 8 6 669 Garden Exhibit (see below)

Premiums: 1st -\$25; 2nd -\$20; 3rd -\$15; 4th \$10; 5th -\$5

A 24"x 24" container will be provided for display. Each exhibit is to consist of:

1. Three different root vegetables
2. Three different pod vegetables
3. Red, yellow and miniature tomatoes
4. One head cabbage. To make the display full, fill with any other vegetable.

Class 7 -Jellies, butters, jams, pickles

All premiums are: \$3.00 (first), \$2.00 (second) unless otherwise stated. Products of 2021 must be shown in clear glass or standard jelly glasses. Can lids must not be covered. NO PARAFFIN. Jellies 1/2 or 1pt. Glass jar, named

- 8 7 700 Blackberry
- 8 7 701 Elderberry
- 8 7 702 Currant
- 8 7 703 Apple
- 8 7 704 Red Raspberry
- 8 7 705 Black Raspberry
- 8 7 706 Grape
- 8 7 707 Plum
- 8 7 708 Any other variety, named Butters
- 8 7 709 Apple
- 8 7 710 Peach
- 8 7 711 Pear
- 8 7 712 Any other, named

BOOK 8 - HORTICULTURE (cont.)**CLASS 7 Jellies, Butters, Jams & Pickles continued
Jams & Preserves 1/2 or 1 pt. glass jar, named**

- 8 7 713 Apple
- 8 7 714 Peach
- 8 7 715 Pear
- 8 7 716 Thimbleberry
- 8 7 717 Strawberry
- 8 7 718 Any other, named

Pickles in pint or quart jar

- 8 7 719 Sweet whole
- 8 7 720 Sweet chunk
- 8 7 721 Cucumbers, small whole
- 8 7 722 Cucumbers, sliced
- 8 7 723 Cucumbers, dill
- 8 7 724 Hot peppers
- 8 7 725 Any other, named

Relishes, Sauces & Miscellaneous

- 8 7 726 Bean salad
- 8 7 727 Beets, pickled
- 8 7 728 Salsa
- 8 7 729 Sauerkraut
- 8 7 730 Pickle relish
- 8 7 731 Corn relish
- 8 7 732 Spaghetti sauce
- 8 7 733 Chili sauce
- 8 7 734 Any other, named

Fruit in pint or quart jars

- 8 7 735 Apricots
- 8 7 736 Red or black raspberries
- 8 7 737 Red cherries
- 8 7 738 Black cherries
- 8 7 739 Peaches
- 8 7 740 Pears
- 8 7 741 Plums
- 8 7 742 Applesauce
- 8 7 743 Spiced fruit
- 8 7 744 Grape juice
- 8 7 745 Fruit cocktail
- 8 7 746 Pineapple
- 8 7 747 Any other, named
- 8 7 748 Display of any 6 different fruits \$10.00 \$5.00

Vegetables in pint or quart jars

- 8 7 749 Beets
- 8 7 750 Lima beans
- 8 7 751 Green string beans
- 8 7 752 Yellow string beans
- 8 7 753 Carrots, whole or sliced
- 8 7 754 Corn
- 8 7 755 Peas
- 8 7 756 Asparagus, spears or cut
- 8 7 757 Cauliflower
- 8 7 758 Pumpkin



- 8 7 759 Tomatoes, whole red or yellow
 - 8 7 760 Tomato juice
 - 8 7 761 Vegetable soup
 - 8 7 762 Any other
 - 8 7 763 Display of any 6 different vegetables
 - 8 7 764 Display canned meal (6 jars)
- Canned meal is to include meat, potato, vegetable, fruit, juice or soup, and pickle or salad. \$10.00 \$5.00

Meat in pint or quart jar

- 8 7 765 Beef
- 8 7 766 Pork
- 8 7 767 Chicken
- 8 7 768 Venison
- 8 7 769 Fish
- 8 7 770 Mincemeat
- 8 7 771 Sausage
- 8 7 772 Any other, named

Class 8 - Dehydrated fruits & vegetables Pint

- 8 8 800 Peaches \$2.00 \$1.00
- 8 8 801 Pears \$2.00 \$1.00
- 8 8 802 Apricots \$2.00 \$1.00
- 8 8 803 Bananas \$2.00 \$1.00
- 8 8 804 Fruit leathers \$2.00 \$1.00
- 8 8 805 Apple \$2.00 \$1.00
- 8 8 806 Strawberry \$2.00 \$1.00
- 8 8 807 Any other, named \$2.00 \$1.00
- 8 8 808 Peppers \$2.00 \$1.00
- 8 8 809 Soup \$2.00 \$1.00
- 8 8 810 Onions \$2.00 \$1.00
- 8 8 811 Carrots \$2.00 \$1.00
- 8 8 812 Celery \$2.00 \$1.00
- 8 8 813 String of hot peppers (String of peppers should measure 18" from stem to tip) \$2.00 \$1.00
- 8 8 814 Dehydrated herbs \$2.00 \$1.00
- 8 8 815 Beef jerky \$2.00 \$1.00
- 8 8 816 Any other \$2.00 \$1.00

Miscellaneous

- 8 8 817 Eggs, best doz. Any kind \$2.00 \$1.00
- 8 8 818 Eggs, best doz. Brown \$2.00 \$1.00
- 8 8 819 Eggs, best doz. White \$2.00 \$1.00
- 8 8 820 Lard \$2.00 \$1.00
- 8 8 821 Homemade soap (1 cake) \$2.00 \$1.00
- 8 8 822 Homemade Hand Lotion (1) \$2.00 \$1.00
- 8 8 823 Maple syrup light amber 1 qt. \$5.00 \$3.00 \$2.00
- 8 8 824 Maple syrup med. amber 1 qt. \$5.00 \$3.00 \$2.00
- 8 8 825 Maple syrup dark amber 1 qt. \$5.00 \$3.00 \$2.00
- 8 8 826 Maple Candy, 5 pcs. \$5.00 \$3.00 \$2.00

Class 9 - Apples, pears, plums, grapes Apples, home grown (5)

- 8 9 900 Jonathan \$2.00 \$1.00
- 8 9 901 Red delicious \$2.00 \$1.00
- 8 9 902 Yellow delicious \$2.00 \$1.00
- 8 9 903 McIntosh \$2.00 \$1.00
- 8 9 904 Northern spy \$2.00 \$1.00

BOOK 8 - HORTICULTURE (cont.)**Class 9 - Apples, pears, plums, grapes Apples, home grown (5) - continued**

- 8 9 905 Crabapples \$2.00 \$1.00
- 8 9 906 Any variety, named \$2.00 \$1.00
- 8 9 907 Pears (5) Any variety \$2.00 \$1.00
- 8 9 908 Plums (5) \$2.00 \$1.00
- 8 9 909 Other \$2.00 \$1.00 Grapes, 3 bunches
- 8 9 910 Concord (purple) \$2.00 \$1.00
- 8 9 911 Niagara (white) \$2.00 \$1.00
- 8 9 912 Any variety, named \$2.00 \$1.00

Class 10 - Youth Class

Judging set for Sat. Sept. 7th if judges are available.

Premiums: 1st - \$3.00, 2nd - \$2.00, 3rd - \$1.00

Rules:

1. Open to all youth 4-H age of any County.
2. Youth ages 13—19 must purchase a \$5 registration fee. Youth ages 12 and under will receive awards only, no premiums.
3. Entries MUST BE properly named.
4. Exhibitors may make TWO ENTRIES PER CLASS
5. All entries will be judged on TABLE QUALITY.

Youth Potatoes (5)

- 8 10 1000 White, any variety named
- 8 10 1001 Red, any variety named
- 8 10 1002 Sweet, any variety named
- 8 10 1003 Any other variety, named
- 8 10 1004 Largest by diameter (1)

Youth Beets (5)

- 8 10 1005 Table, named Youth Turnips (5)
- 8 10 1006 Named

Youth Parsnips (5)

- 8 10 1007 Named

Youth Carrots (5)

- 8 10 1008 Named

Youth Onions (5)

- 8 10 1009 Yellow
- 8 10 1010 White
- 8 10 1011 Red
- 8 10 1012 Largest by diameter (1)

Youth Tomatoes

- 8 10 1020 Canning (5)
- 8 10 1021 Slicer (5)
- 8 10 1022 Salad (10)
- 8 10 1023 Heaviest (1)

Youth Peppers (3) named

- 8 10 1024 Large green
- 8 10 1025 Large red
- 8 10 1026 Large yellow
- 8 10 1027 Hot peppers

Youth Cabbage (1 head) named

- 8 10 1029 Round
- 8 10 1030 Flat
- 8 10 1031 Red
- 8 10 1032 Largest by diameter, any variety
- 8 10 1033 Heaviest head, any variety

**Youth Cucumbers**

- 8 10 1034 4 slicers
- 8 10 1035 Plate of pickling (6)

Youth Watermelon (1)

- 8 10 1040 Any variety, named
- 8 10 1041 Largest diameter
- 8 10 1042 Largest by weight

Youth Muskmelon (1)

- 8 10 1043 Any variety, named
- 8 10 1044 Largest by weight

Youth Pumpkins (1) named

- 8 10 1050 Paint a jack-o-lantern (Youth Only) \$5.00 \$3.00 \$2.00

- 8 10 1051 Any variety pie
- 8 10 1052 Any variety field
- 8 10 1053 Largest by diameter
- 8 10 1054 Heaviest

MUST HAVE CERTIFIED WEIGHT SLIP FROM ANYWHERE**Youth Squash (2) named**

- 8 10 1060 Summer yellow
- 8 10 1061 Acorn
- 8 10 1062 Butternut
- 8 10 1063 Zucchini
- 8 10 1064 Turk's turban
- 8 10 1065 Any other variety, named

Youth Beans

- 8 10 1070 Green string (10)
- 8 10 1071 Yellow
- 8 10 1072 Lima
- 8 10 1073 Any other variety

Youth Gourds

- 8 10 1074 Ornamental (5)

Youth Popcorn

- 8 10 1080 White, 10 ears
- 8 10 1081 Yellow, 10 ears
- 8 10 1082 Red, 10 ears

Class 11 - Youth Canning-Ball Fresh Preserving

Premiums:

1st -\$3.00, 2-\$2.00, 3-\$1.00 unless stated different.

Youth Fruit-pints or quarts

- 8 11 1100 Cherries, red or black
- 8 11 1101 Peaches
- 8 11 1102 Pears
- 8 11 1103 Applesauce

Youth Vegetables pints or quarts

- 8 11 1110 Beans, green
- 8 11 1111 Beets
- 8 11 1112 Carrots, whole or sliced
- 8 11 1113 Tomatoes
- 8 11 1114 Dill Pickles, any variety
- 8 11 1115 Sweet Pickles, any variety
- 8 11 1116 Jam, any variety
- 8 11 1117 Jelly, any variety

Williams County Senior Fair Gillette & Still Exhibits - Book 9

Superintendent: Danyel Wortkoetter

Asst. Superintendent: Scott Carroll

Committee: Chad Carroll

FLORICULTURE DIVISION

Committee Members
Pioneer Garden Club, Pulaski Garden Club
Williams County Master Gardeners



2022 Williams County Fair Flower Show Flower Show Rules

1. Any Garden Club will require no entry fee; however, an exhibitor's number for a club must be obtained from the Fair board. No individual can exhibit using the club exhibitor number.
2. Entries are open to anyone who wishes to exhibit with the exception of classes 5&8, which are open to Garden Clubs only.
3. Each entry must be accompanied by an exhibitor's tag correctly filled in with the name, address, section and class. Juniors must list age on entry tag.
4. All exhibits for the first show must be entered Fri., Sept. 9th, from 9 am to 7 pm and on Sat., Sept. 10th, from 7 am to 10 am. All exhibits must be in place by 10:30 am on 9/10 at the Gillette Cultural Arts Building, with judging to begin at noon, Saturday. The first show must be removed on Tuesday, Sept. 13th, from 4:30 pm to 8:00 pm. Entries for the second show may be entered on Tues. Sept. 13th from 6 pm to 8 pm or before Wed., Sept. 14th at 10:00 am. All exhibits must be in place by 10:30 am with judging to begin at noon. All exhibits will be removed on Friday night between 4pm and 8pm.
5. All specimen entries must be grown by the exhibitor and correctly named by variety. Exhibitors may enter more than one specimen per class, providing that each entry is a different named variety.
6. When the schedule calls for a definite number, as in floriculture exhibits, buds are considered a bloom and a greater or lesser number disqualifies the exhibit.
7. Exhibitors may enter as many classes in the Artistic Section as desired, but only one entry per premium number. Artistic Designs must be the work of the exhibitor. Plant material may be obtained from any source for use in arrangements.
8. Novice Exhibitor is anyone who enters competition for the first time or has not won a blue ribbon in a design class.
9. No artificial material will be permitted. Any dried, dyed and painted material may be used but fresh cut material must be featured unless otherwise stated. No painted fresh material will be permitted.
10. All plant material used in the artistic designs must be listed on a card accompanying the arrangements.
11. All containers and accessories should have the owner's name on them in an inconspicuous place.
12. All due care will be taken, but no responsibility is assumed for broken or lost articles.
13. In sections 3 & 11, the plant must have been in the possession of the exhibitor for at least 3 months.
14. All entries will be placed as directed by the placement committee.
15. If there is no entry in a class, the placement committee reserves the right to remove cards for those entries and place other entries accordingly.
16. Entries will be judged by Standard System of judging, by an accredited judge of the Ohio Association of Garden Clubs, Inc. The judge's decision is final. Judging is to be limited to four hours.
17. No one but the judge and one clerk from each Garden Club will be allowed on the floor during the judging, unless oral judging is requested.
18. Judges will disqualify any exhibit that does not meet the requirements of the class in which it is entered.
19. THE BEST OF SHOW award will be given to any Junior and Senior in the Artistic Division for both shows.
20. The GREEN THUMB Award will be given to any Junior or Senior in the Floriculture Division for both shows.
21. The INDOOR GROWER award may be given to any Senior or Junior in the house plant division, first show only.
22. The PEOPLE'S AWARD will be given after the public's vote is counted.

BOOK 9 - FLORICULTURE (cont.)**Standards For Judging**

In all classes, specimens should clean and water in containers, fresh.

SPECIMEN FLOWERS

Form—perfection of form for type of flower. Symmetry very important for most cultivars.

Color—clear, rich, luminous color.

Substance—firm, crisp petals.

Stem and Foliage—clean, healthy foliage, strong straight stem (length in proportion to size of bloom).

Size—large blooms for type and variety.

Grooming—clean and disbudded if required.

Note: Classes asking for three of a variety, the three stems should be as identical in size, color and form as possible.

POTTED PLANTS -flowering and foliage

Flowers, Quality and Quantity (if flowering plant)

Form and Symmetry of Plant

Health and Vigor of Foliage

Size of Plant and /or Flowers (typical of variety)

Grooming

Correct Labeling of Plant

Note: African violets should have only one crown to a pot.

Pots should be scrubbed, and plant should be clean.

PLANTER DIVISION RULES

Shape and color of the container is exhibitor's choice. The Planter must be under 18" inside measurements. The planter is to be entered the first show and will stay all week and feature orange. The Herb Planter is under 18" and contain at least one herb.

ARRANGEMENT ARTISTIC DESIGN CLASSES - A design is the orderly arrangement of the component parts to each other and to their environment. For further explanations of designs see OAGC Handbook.

Illuminary Design—Is a three-dimensional creative design incorporating light(s) as one of the components.

Ikenaba Design—In the Japanese manner most arrangements are composed of three main lines which form a scalene triangle, frequently referred to as Heaven, Man, and Earth. Class type to be announced.

Foliage Design—Using a Kitchen Item add only foliage materials to complete the design.

Small Design—Using Spice Container create a design more than 5 inches and less than 12 inches in any one direction.

Creative Design, Tea Pot—Develop a creative floral design to include a Tea Pot.

Underwater Design—Is three dimensional, using one or more containers with some components placed under water to create interest.

Traditional Design—Using Fruits and/or Vegetables create a traditional shaped design.

Exhibition 2 Table Design—This type is not arranged for actual service of food. Type 2 is without a floral design, but with some plant material as a secondary part of the whole picture.

Fantasy Flow Design—Is a three-dimensional creative design with a dominant form flowing away from it, establishing an additional creative form.

Decorated Shoe—Dried Materials.

Satellite Design—Using a curving connective line that become a vital part of is rhythmic pattern with a main and smaller design of the same color, form and/or texture placed near its base.

FLORICULTURE EXHIBITS**BOOK 9 SECTION 1 AND 2**

Section 1: First Show Saturday, Sept. 11, 2020

Section 2: Second Show: Wednesday, Sept. 15, 2020

ROSES

9 1-2 1 HYBRID TEA ROSES, one bloom, disbudded with foliage attached

Note: Roses are best entered the day of judging—Saturday and Wednesday mornings before 10 a.m.

9 1-2 2 FLORIBUNDA & CLIMBING FLORIBUNDA

9 1-2 3 GRANDIFLORA & CLIMBING GRANDIFLORA

9 1-2 4 MINIATURE & CLIMBING MINIATURE

9 1-2 5 OLD GARDEN ROSES

9 1-2 6 POLYANTHA & CLIMBING POLYANTHA

SPECIAL VARIETIES

9 1-2 7 Salvia, Fairy Queen

9 1-2 8 Cosmo, Cosmic Mix—any one of 3 colors

9 1-2 9 Listhianthis, any color

ASTERS

9 1-2 10 Perennial, 1 spray with foliage attached

9 1-2 11 Annual with foliage attached

BEGONIA

9 1-2 12 Fibrous

9 1-2 13 Tuberous

CALADIUM

9 1-2 14 Any variety, 1 leaf

CALENDULA, disbudded with foliage attached

9 1-2 15 Large, same variety, 3 blooms

CELOSIA

9 1-2 16 Crested, any variety, laterals removed

9 1-2 17 Plumed, any variety, laterals permitted

CHRYSANTHEMUMS, foliage attached

9 1-2 18 White, 1 spray

9 1-2 19 Yellow, 1 spray

9 1-2 20 Rust, red or bronze, 1 spray

9 1-2 21 Purple, 1 spray

9 1-2 22 Any other, 1 spray

CLEMATIS

9 1-2 23 Any variety, 1 stem

CLEOME

9 1-2 24 Any variety, 1 spike, seed pods left intact



BOOK 9 - FLORICULTURE (cont.)**COLEUS**

9 1-2 25 Trailing

9 1-2 26 Upright

CORAL BELLS, Heuchera

9 1-2 27 Shades of Green any variety, 1 leaf

9 1-2 28 Any Other variety, 1 leaf

COREOPSIS

9 1-2 29 Any variety, 1 stem, foliage attached

COSMOS (Excludes "Cosmic Mix")

9 1-2 30 Any variety, 1 bloom

DAHLIA, disbudded with foliage attached (side buds left on disqualify specimen). Color is determined by the predominant color of petal.

9 1-2 31 Under 4" White, Green, Yellow, 1 bloom

9 1-2 32 Under 4" Orange, Salmon, Peach, 1 bloom

9 1-2 33 Under 4" Pink, Red, Rose, 1 bloom

9 1-2 34 Under 4" Lavender, Purple, Blue, 1 bloom

9 1-2 35 4" to 8" White, Green, Yellow, 1 bloom

9 1-2 36 4" to 8" Orange, Salmon, Peach, 1 bloom

9 1-2 37 4" to 8" Pink, Red, Rose, 1 bloom

9 1-2 38 4" to 8" Lavender, Purple, Blue

9 1-2 39 Over 8" Any Color

GAILLARDIA

9 1-2 40 Any variety, 1 bloom

GLADIOLUS, stems should not exceed 20" length from bottom floret down; side shoots must be removed, but foliage attached; proportion 2/3 bloom head to 1/3 stem all florets facing forward and bottom florets should be fresh

9 1-2 41 White, green, yellow

9 1-2 42 Orange, salmon, peach

9 1-2 43 Pink, red, rose

9 1-2 44 Lavender, purple, blue

9 1-2 45 Any other color

9 1-2 46 Miniature or small 100-200 size, any color

HELIANTHUS

9 1-2 47 Any variety, 1 stem

HERB

9 1-2 48 Basil, 1 stem

9 1-2 49 Chives, 3 stems with flowers

9 1-2 50 Dill, 1 stem

9 1-2 51 Lavender, 3 stems

9 1-2 52 Mint, 1 stem

9 1-2 53 Parsley, 1 stem other than Curly Leaf

9 1-2 54 Rosemary, 1 stem

9 1-2 55 Sage

9 1-2 56 Any other variety, 1 stem

HOSTA

9 1-2 57 Mini Solid: leaf under 6 square inches, 1 leaf

9 1-2 58 Mini variegated

9 1-2 59 Small solid: leaf size 6-30 square inches, 1 leaf

9 1-2 60 Small variegated

9 1-2 61 Medium solid: leaf size 31-64 square inches, 1 leaf

9 1-2 62 Medium variegated

9 1-2 63 Large solid: leaf size 65-120 inches, 1 leaf

9 1-2 64 Large variegated

9 1-2 65 Giant solid: leaf size over 121 square inches, 1 leaf

9 1-2 66 Giant variegated

MARIGOLD, large flowered, disbudded with foliage attached

9 1-2 67 Orange

9 1-2 68 Yellow

9 1-2 69 White

MARIGOLD, Small to mid-sized spray forms, not disbudded, foliage attached

9 1-2 70 Orange, 1 spray

9 1-2 71 Yellow, 1 spray

9 1-2 72 Multi-colored, 1 spray

ORNAMENTAL GRASSES

9 1-2 73 Any variety 3 stems with plumage/inflorescence attached

RUDBECKIA, 1 stem disbudded, with foliage attached

9 1-2 74 Any variety

SALVIA

9 1-2 75 Any blue variety

9 1-2 76 Any red variety

SEDUM

9 1-2 77 Small - Any Variety Under 3" bloom

9 1-2 78 Large - Any Variety Over 3" bloom

SNAPDRAGON

9 1-2 79 Any variety

SUNFLOWER - Other than Autumn Blend

9 1-2 80 Yellow or yellow blend, 1 bloom, disbudded, with foliage attached

9 1-2 81 Red or red blend, 1 bloom, disbudded, with foliage attached

9 1-2 82 Any other color, 1 stem, disbudded, with foliage attached

VINCA

9 1-2 83 Any variety, 1 stem

ZINNIA

9 1-2 84 Small Flowered 1-3 1/2 "bloom, 1 stem, disbudded, with foliage attached

9 1-2 85 Dahlia type, any variety, 1 stem disbudded, with foliage attached

9 1-2 86 Cactus flowering, any variety 1 bloom, with foliage attached

MISCELLANEOUS for specimens with no category

9 1-2 87 Flowering Vine, any variety, 1 stem (not to exceed 24" stem length)

9 1-2 88 Flowering Shrub, any variety, 1 stem (not to exceed 24" stem length)

9 1-2 89 Berried Branch, any variety, 1 stem (not to exceed 24" stem length)

9 1-2 90 Annual, Round Form, 1 bloom (stem in proportion to bloom size), disbudded

9 1-2 91 Annual, Spike Form, 1 stem (stem in proportion to bloom size) laterals permitted

9 1-2 92 Annual, Spray Form, 1 stem (stem in proportion to bloom size) laterals permitted

9 1-2 93 Biennial or Perennial, Round Form, any variety, 1 bloom (stem in proportion to bloom size), disbudded



BOOK 9 - FLORICULTURE (cont.)

9 1-2 94 Biennial or Perennial, Spike Form, 1 stem (stem in proportion to bloom size), laterals permitted

9 1-2 95 Biennial or Perennial, Spray Form, 1 stem (stem in proportion to bloom size), laterals permitted

9 1-2 96 Flowering Bulb or Tuber

9 1-2 97 Unusual Bloom, any variety, shape or color

DRIED, not to exceed 24" stem length (stays all week)

9 1 98 Static, any variety, 1 spray

9 1 99 Yarrow, any color, 2 stems

9 1 100 Any other variety, 1 stem

PLANTS

(Judged first show, stays all week)

BOOK 9 SECTION 3

9 3 1 African Violet, single bloom, any variety-1 crown per pot

9 3 2 African Violet, double bloom, any variety-1 crown per pot

9 3 3 Foliage plant, one variety, 6-8" pot

9 3 4 Flowering plant, one variety 6-8" pot

9 3 5 Cactus or succulent, one variety

PLANTER DIVISION**BOOK 9 SECTION 4**

9 4 1 "My Country Home" Window Box Planter

CLUB ARTISTIC DESIGNS**BOOK 9 SECTION 5**

Clubs will get 1st, 2nd or 3rd place ribbons

First Show: Saturday Sept. 10th, 2022

9 5 1 "Firefly Night" Luminary Design

Second Show: Wednesday Sept. 14th, 2022

9 5 2 "Tranquility" Ikebana Design

ARTISTIC DESIGNS**BOOK 9 SECTION 6**

First Show, Saturday, September 10, 2022

Background panel any size is optional for artistic designs

9 6 1 "Let's Get Cooking" Foliage Design, Using a Kitchen Item

9 6 2 "Sugar & Spice" Small Design, Using Spice Container

9 6 3 "Teatime" Creative Design, Using a Tea Pot

9 6 4 "Open Road" Using Roadside Material, Fresh and/or Dried

9 6 5 "Stepping Out" Decorated Shoe, Dried Materials

ARTISTIC DESIGNS**BOOK 9 SECTION 7**

Second Show, Wednesday, September 14, 2022

Background panel any size is optional for artistic designs

9 7 1 "Farmers Market" Traditional Design, using Fruits and/or Vegetables

9 7 2 "Sunday Dinner" Exhibition 2 Table Design

9 7 3 "Country Trail" Fantasy Flow Design

9 7 4 "Country Kitchen" Satellitic Design

9 7 5 "Creek Crossing" Underwater Design

JUNIOR DIVISION**BOOK 9 SECTION 9 AND 10**

Section 9-First Show: Saturday, September 10, 2022

Section 10- Second Show: Wednesday, September 14, 2022

COSMOS

9-10 1 Any variety, 1 stem-age under 12

9-10 2 Any variety, 1 stem-age 13 over

MARIGOLD, with foliage attached

9-10 3 Large type, 1 bloom, disbudded-age under 12

9-10 4 Large type, 1 bloom, disbudded-age 13 over

9-10 5 Small type, 1 spray-age under 12

9-10 6 Small type, 1 spray-age 13 over

ZINNIA, disbudded with foliage attached

9-10 7 Cactus flowered, 1 bloom-age under 12

9-10 8 Cactus flowered, 1 bloom-age 13 over

9-10 9 Dahlia flowered, 1 bloom-age under 12

9-10 10 Dahlia flowered, 1 bloom-age 13 over

MISCELLANEOUS

9-10 11 Annual round form, 1 bloom (stem in proportion to bloom size), disbudded-age under 12

9-10 12 Annual round form, 1 bloom (stem in proportion to bloom size), disbudded-age 13 over

9-10 13 Annual spike form, 1 stem (stem in proportion to bloom size), laterals permitted-age under 12

9-10 14 Annual spike form, 1 stem (stem in proportion to bloom size), laterals permitted-age 13 over

9-10 15 Annual spray form, 1 stem (stem in proportion to bloom size) -age under 12

9-10 16 Annual spray form, 1 stem (stem in proportion to bloom size) -age 13 over

BOOK 9 SECTION 11 - PLANTS

(Judged first show, stays all week)

9 11 1 Foliage or Flowering Plant, 1 variety, 6"-8" pot-age under 12

9 11 2 Foliage or Flowering Plant, 1 variety, 6"-8" pot-age 13 over

BOOK 9 SECTION 12-PLANTER

(Judged first show, stays all week)

6"- 12" Pot (Inside measurement) 3 or more varieties of Succulents

9 12 1 "Kids Garden" Age Under 16

BOOK 9 SECTION 13 - ARTISTIC DESIGNS

First Show: Saturday, September 10, 2022

AGE UNDER 12

9 13 1 "Barefootin" Dried Design in a Shoe

AGE 13 OVER

9 13 2 "Barefootin" Dried Design in a Shoe

BOOK 9 SECTION 14

Ribbons

KIDS DAY PROGRAM

Mon., Sept. 12, 2022—Adults @ 12:00pm, Kids @ 1:30pm

Located in the Gillette Building

Make a floral design to exhibit at the fair. Youth any age are welcome to join members of the Pulaski & Pioneer Garden Club in learning to make flower arrangements. All items will be provided.



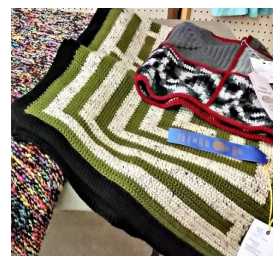
Williams County Senior Fair Gillette & Still Exhibits - Book 10

Superintendent: Danyel Wortkoetter

Asst. Superintendent: Scott Carroll

NEEDLEWORK CRAFTS DIVISION

Committee Members
Chad Carroll & Susan Walker



BOOK 10 - Needlework & Crafts

All items in Needlework Book 10 should be of NEW CONSTRUCTION. Any old or antique items will not be accepted. Those items can be entered under Book 12 Antiques and registered under the new textiles category.

All entries must be submitted by the last Friday in August. Tags can be picked up in the Secretary's office the following week. All items must be brought to the Gillette Cultural Arts Building on the THURSDAY BEFORE THE FAIR from 10am to 7pm. Judging of needlework and crafts will be on Friday at 9:00 am.

Rules:

1. Exhibits in this department are open to all counties. No articles may be exhibited more than two (2) years.
2. Any articles that previously have won a ribbon at this fair are not eligible.
3. All articles shown must be the work of the exhibitor or some member of his or her family.
4. Exhibitors must bring a written list of exhibits as they appear in the premium lists, and no article will be examined by the Secretary.
5. DO NOT Task the Secretary to make entries of any article not listed, as they will not be considered by the Judge.
6. No worn, soiled or unfinished article will be considered by the Judge.
7. Exhibitors may enter two entries per item number, but only one premium per item number / per exhibitor will be paid.
8. This department will be judged by appointed Judges.
9. The arrangement of all exhibits must be left to the Superintendent and the Assistants. They will assign locations and their decisions will be final on all questions that may arise.
10. Any disrespectful conduct on the part of the Exhibitors should be reported to the Judge or Superintendent who may reject any or all entries not properly made.

11. Any article shown and considered unworthy of first premium may be awarded second premium or none. No article will receive more than one premium.

12. There is no guarantee of the safety of exhibits, but all precautions possible will be taken to protect exhibits.

13. Premium cards have no value in receiving payment of premiums, as they are paid from Judges' books, which are final in all cases. Premiums will be mailed the first business day after the annual fair.

14. Items will be released on Friday following the fair between 4 pm and 8 pm.

15. NO ENTRIES ACCEPTED AFTER DEADLINE.

16. Anything left after 8pm Friday can be picked up at the office during office hours.

17. All exhibitors will pay \$1.00 per entry.

Needlework Scorecard Total 100%

Workmanship – 40%

Beauty and simplicity of design – 25%

Harmony of color and material – 25%

General appearance – 10%

Enter by using Book-Class-Lot-Description

Two Best of Show awards will be chosen by the judges from all needlework and craft entries.

Class 1 – Quilts, Hand Quilted & Comforters, Knotted

(For Baby Quilts & Comforters see Infant Items)

Premiums: 1st - \$8.00, 2nd - \$6.00, 3rd - \$4.00

10 1 1 Cross-Stitch or Hand Embroidered

10 1 2 Appliqué

10 1 3 Pieced, Two Colors

10 1 4 Pieced, Scrap Quilt

10 1 5 Pieced & Quilted

10 1 6 Lap Quilt

10 1 7 Crazy Quilt, new construction

10 1 8 Miniature Quilt under 15" x 18"

10 1 9 Comforter, Pieced & Knotted

10 1 10 Beginner Quilt (simple design by beginning quilter)

10 1 11 Quilt top under construction

10 1 12 T-Shirt Quilt

10 1 13 Quilt made from a kit

10 1 14 Not Listed

BOOK 10 - NEEDLEWORK & CRAFTS (cont.)**Class 2 – Quilts, Longarm Machine Quilted**

Premiums: 1st - \$8.00, 2nd - \$6.00, 3rd - \$4.00

- 10 2 1 Cross Stitch or Embroidered
- 10 2 2 Appliqué
- 10 2 3 Pieced, two colors
- 10 2 4 Pieced Scrap Quilt
- 10 2 5 Pieced & Quilted
- 10 2 6 Lap Quilt
- 10 2 7 Miniature Quilt (under 15" x 18")
- 10 2 8 Beginner Quilt (simple design by beginning quilter)
- 10 2 9 T-Shirt Quilt
- 10 2 10 Quilt made from a kit
- 10 2 11 Not Listed

Class 3 – Quilts, Home Sewing Machine Quilted

Premiums: 1st - \$8.00, 2nd - \$6.00, 3rd - \$4.00

- 10 3 1 Cross Stitch or Embroidered
- 10 3 2 Appliqué
- 10 3 3 Pieced, two colors
- 10 3 4 Pieced, Scrap Quilt
- 10 3 5 Pieced & Quilted
- 10 3 6 Lap Quilt
- 10 3 7 Miniature Quilt (under 15" x 18")
- 10 3 8 Beginner Quilt (simple design by beginning quilter)
- 10 3 9 T-Shirt Quilt
- 10 3 10 Quilt made from a kit
- 10 3 11 Not Listed

Class 4 – Bedspreads

Premiums: 1st - \$6.00, 2nd - \$4.00, 3rd - \$3.00

- 10 4 1 Crocheted
- 10 4 2 Embroidered
- 10 4 3 Pieced
- 10 4 4 Knitted
- 10 4 5 Not Listed

Class 5 – Afghans

Premiums: 1st - \$7.00, 2nd - \$5.00, 3rd - \$3.00

- 10 5 1 Woven Fabric
- 10 5 2 Granny Square, any variation
- 10 5 3 Knitted
- 10 5 4 Cable Panel
- 10 5 5 Ripple
- 10 5 6 Hairpin Lace
- 10 5 7 Navajo
- 10 5 8 Afghan Stitch
- 10 5 9 Counted Cross Stitch on woven fabric
- 10 5 10 Lap Size (3'x5' max)
- 10 5 11 Scrap Yarn
- 10 5 12 Mile-a-Minute
- 10 5 13 Not Listed

Class 6 – Rugs

Premiums: 1st - \$4.00, 2nd - \$2.00, 3rd - \$1.00

- 10 6 1 Crocheted
- 10 6 2 Latch Hook
- 10 6 3 Braided
- 10 6 4 Woven
- 10 6 5 Hooked wool material
- 10 6 6 Not Listed

Class 7 – Tablecloths

Premiums: 1st - \$3.00, 2nd - \$2.00

- 10 7 1 Crocheted
- 10 7 2 Cross Stitch
- 10 7 3 Hand Embroidered
- 10 7 4 Machine Embroidered
- 10 7 5 Holiday
- 10 7 6 Not Listed

**Class 8 – Lunch Cloths & Placemats (2)**

Premiums: 1st - \$2.00, 2nd - \$1.00

- 10 8 1 Cross Stitch
- 10 8 2 Hand Embroidered
- 10 8 3 Machine Embroidered
- 10 8 4 Pieced Topper or Runner
- 10 8 5 Pieced Placemats (2)
- 10 8 6 Not Listed

Class 9 – Pillowcases

Premiums: 1st - \$2.00, 2nd - \$1.00

- 10 9 1 Hand Embroidery
- 10 9 2 Cross Stitch
- 10 9 3 Not Listed

Class 10 – Pot Holders (2) Dishcloths (2)

Premiums: 1st - \$1.50, 2nd - \$1.00

- 10 10 1 Knitted Pot Holders
- 10 10 2 Crocheted Pot Holders
- 10 10 3 Patchwork Pot Holders
- 10 10 4 Knitted Dishcloths
- 10 10 5 Crocheted Dishcloths
- 10 10 6 Not Listed

Class 11 – Doll Clothes

Premiums: 1st - \$1.50, 2nd - \$1.00

- 10 11 1 Machine sewn
- 10 11 2 Hand sewn
- 10 11 3 Knitted
- 10 11 4 Crocheted
- 10 11 5 Not Listed

Class 12 – Crocheting

Premiums: 1st - \$1.50, 2nd - \$1.00

- 10 12 1 Centerpiece – over 14"
- 10 12 2 Doily – under 14"
- 10 12 3 Buffet or Vanity set
- 10 12 4 Dresser scarf
- 10 12 5 Table Topper or Runner
- 10 12 6 Not Listed

Class 13– Crocheted Garments

Premiums: 1st - \$5.00, 2nd - \$3.00, 3rd - \$1.00

- 10 13 1 Ladies' Pullover Sweater
- 10 13 2 Man's Pullover Sweater
- 10 13 3 Adult Cardigan
- 10 13 4 Child's Sweater
- 10 13 5 Vest
- 10 13 6 Shawl
- 10 13 7 Not Listed



BOOK 10 - NEEDLEWORK & CRAFTS (cont.)**Class 14 – Crocheted Items (small)**

Premiums: 1st - \$3.00, 2nd - \$2.00, 3rd - \$1.00

- 10 14 1 Scarf
- 10 14 2 Hat or Cap
- 10 14 3 Slippers
- 10 14 4 Gloves or Mittens
- 10 14 5 Not Listed

Class 15 – Knitted Garments

Premiums: 1st – \$5.00, 2nd - \$3.00, 3rd - \$1.00

- 10 15 1 Ladies' Pullover Sweater
- 10 15 2 Man's Pullover Sweater
- 10 15 3 Adult Cardigan
- 10 15 4 Child's Sweater
- 10 15 5 Vest
- 10 15 6 Shawl
- 10 15 7 Not Listed

Class 16 – Knitted Items (small)

Premiums: 1st - \$3.00, 2nd - \$2.00, 3rd - \$1.00

- 10 16 1 Hat or Cap
- 10 16 2 Gloves or Mittens
- 10 16 3 Scarf
- 10 16 4 Slippers
- 10 16 5 Socks
- 10 16 6 Not Listed

Class 17 – Infant Items

Premiums: 1st – 3.00, 2nd – \$2.00, 3rd - \$1.00

- 10 17 1 Sweater, crocheted
- 10 17 2 Sweater, knitted
- 10 17 3 Baby Outfit, crocheted, 2 or 3 pieces
- 10 17 4 Baby Outfit, knitted, 2 or 3 pieces
- 10 17 5 Booties, crocheted
- 10 17 6 Booties, knitted
- 10 17 7 Bibs (2)
- 10 17 8 Bonnet, crocheted
- 10 17 9 Bonnet, knitted
- 10 17 10 Dress, crocheted
- 10 17 11 Dress, knitted
- 10 17 12 Baby Afghan, crocheted
- 10 17 13 Baby Afghan, knitted
- 10 17 14 Baby Quilt, hand quilted
- 10 17 15 Baby Quilt, machine quilted
- 10 17 16 Baby Comforter, knotted
- 10 17 17 Baby coverlet, embroidered
- 10 17 18 Not Listed

Class 18 – Machine Sewing**Clothing Construction**

Premiums: 1st - \$3.00, 2nd - \$2.00, 3rd - \$1.00

- 10 18 1 Dress, Woman's, 1 or 2 piece
- 10 18 2 Outer Garment
- 10 18 3 Suit
- 10 18 4 Vest
- 10 18 5 Slacks
- 10 18 6 Skirt

- 10 18 7 Blouse or Top, woman's or girl's
- 10 18 8 Shirt, man's or boy's
- 10 18 9 Dress, child's
- 10 18 10 Child's Outfit, 2 pieces
- 10 18 11 Christening Gown
- 10 18 12 Costume, Adult
- 10 18 13 Costume, Child
- 10 18 14 Apron
- 10 18 15 Not Listed

Class 19 – Purse Making & Tote Bags

Premiums: 1st - \$2.00, 2nd - \$1.00

- 10 19 1 Purse - Small
- 10 19 2 Purse - Medium
- 10 19 3 Purse - Large
- 10 19 4 Purse & Accessories to Match
- 10 19 5 Tote Bag

Class 20 – Pillows, Made Up

Premiums: 1st - \$2.00, 2nd - \$1.00

- 10 20 1 Cross Stitch
- 10 20 2 Needlepoint
- 10 20 3 Counted Cross Stitch
- 10 20 4 Crocheted
- 10 20 5 Appliqué
- 10 20 6 Hooked wool or other medium
- 10 20 7 Hand Quilted
- 10 20 8 Pieced
- 10 20 9 Not Listed

Class 21 – Pictures (must be ready to hang)

Premiums: 1st - \$4.00, 2nd - \$2.00

- 10 21 1 Needlepoint
- 10 21 2 Embroidery
- 10 21 3 Cross Stitch (not counted)
- 10 21 4 Sampler – Cross Stitch
- 10 21 5 Sampler - other
- 10 21 6 Wall Hanging - small (24" or under)
- 10 21 7 Wall Hanging - large (over 24")
- 10 21 8 Wall Hanging - quilted
- 10 21 9 Wall Hanging- hooked
- 10 21 10 Crewel
- 10 21 11 Appliqué
- 10 21 12 Counted Cross Stitch - small (5" x 7" or under)
- 10 21 13 Counted Cross Stitch - medium (up to 11" x 14")
- 10 21 14 Counted Cross Stitch - large (over 11" x 14")
- 10 21 15 Paper Cut Work
- 10 21 16 Pressed Flowers
- 10 21 17 Not Listed



BOOK 10 - NEEDLEWORK & CRAFTS (cont.)**Class 22 – Seasonal Decorations**

Premiums: 1st - \$2.00, 2nd - \$1.00

- 10 22 1 Table Decorations
- 10 22 2 Door Arrangement
- 10 22 3 Decorated Tree Ornament
- 10 22 4 Christmas Wall Hanging
- 10 22 5 Tree Skirt
- 10 22 6 Christmas stocking
- 10 22 7 Not Listed

Class 23 – Misc. (needlework & related items)

Premiums: 1st - \$2.00, 2nd - \$1.00

- 10 23 1 Needlework Item
- 10 23 2 Crewel Embroidery

Class 24 – Woodworking

Premiums: 1st - \$5.00, 2nd - \$3.00, 3rd - \$1.00

- 10 24 1 Hand Carved wood item small (12" or under)
- 10 24 2 Hand Carved wood item large (over 12")
- 10 24 3 Scroll Saw Item Small (12" or under)
- 10 24 4 Scroll Saw Item large (over 12")
- 10 24 5 Turned Wood Item small (12" or under)
- 10 24 6 Turned Wood Item large (over 12")
- 10 24 7 Handmade Wood Item Small (under 12")
- 10 24 8 Handmade Wood Item Medium (12" to 24")
- 10 24 9 Handmade Wood Item large (over 24")

Class 25 – Card Making

Premiums: 1st - \$2.00, 2nd - \$1.00

Youth (up thru age 12)

- 10 25 1 Birthday
- 10 25 2 Christmas
- 10 25 3 Other

Teen (13 thru 19)

- 10 25 4 Birthday
- 10 25 5 Christmas
- 10 25 6 Other

Adult

- 10 25 7 Birthday
- 10 25 8 Christmas
- 10 25 9 Other

Class 26 – Scrapbooking

Premiums: 1st - \$3.00, 2nd - \$2.00

Youth (up thru age 12)

- 10 26 1 Double Page - School
- 10 26 2 Double Page - Pets
- 10 26 3 Double Page - Other
- 10 26 4 Single Page, any subject
- 10 26 5 Mini Album

**Teen (13 thru 18)**

- 10 26 6 Double Page - Sports
- 10 26 7 Double Page - Clubs (4-H, Scouts, etc.)
- 10 26 8 Double Page - Other
- 10 26 9 Single Page, any subject
- 10 26 10 Mini Album

Adult

- 10 26 11 Double Page - Wedding
- 10 26 12 Double Page - Travel
- 10 26 13 Double Page - Other
- 10 26 14 Single Page, any subject
- 10 26 15 Mini Album

Class 27 – Hobbies & Crafts

Premiums: 1st - \$3.00, 2nd - \$2.00

- 10 27 1 Beaded Item, large (over 6")
- 10 27 2 Beaded Item, small (6" or under)
- 10 27 3 Stained Glass Item
- 10 27 4 Handmade Jewelry, Necklace
- 10 27 5 Handmade Jewelry, Bracelet
- 10 27 6 Handmade Jewelry, Earrings
- 10 27 7 Handmade Jewelry, Any Other
- 10 27 8 Rubber Stamp Item
- 10 27 9 Machine Knitted Item
- 10 27 10 Stuffed Animal or Toy
- 10 27 11 Doll, Handmade & Dressed
- 10 27 12 Item made on Loom
- 10 27 13 Door Stop
- 10 27 14 Button Collection (8" x 10" display)
- 10 27 15 Collection (at least 6 items, ready to display)
- 10 27 16 Painted Wood Item
- 10 27 17 Wood Burning Item
- 10 27 18 Model, assembled by Adult (1)
- 10 27 19 Hand Woven Egg Basket
- 10 27 20 Hand Woven Market Basket
- 10 27 21 Hand Woven Grapevine Basket
- 10 27 22 Hand Woven Rag Basket
- 10 27 23 Hand Woven Open- Weave Basket
- 10 27 24 Hand Woven Basket, Any Other
- 10 27 25 Decorated Wreath
- 10 27 26 Gourd Item
- 10 27 27 Recycled Art Item (made from recycled materials)
- 10 27 28 Any Other Craft



**A special note of thanks to
our Department Volun-
teers**

**Laura Allion
Susan Walker**

BOOK 10 - NEEDLEWORK & CRAFTS (cont.)**Class 28 – Youth & Grade Hobby Class**

Premiums: 1st - \$3.00, 2nd - \$2.00, 3rd \$1.00

Exhibitors will please include any container, mounting or other aids that might be useful in properly displaying their articles, collections, handcrafts, etc.

Youth (ages 13 thru 18)

- 10 28 1 Models (1)
- 10 28 2 Other hobby
- 10 28 3 Collection (6 items, ready for display)
- 10 28 4 Wood Item
- 10 28 5 Recycled Art Item (item made from recycled materials)

Grade School (up thru age 12)

- 10 28 6 Models (1)
- 10 28 7 Other hobby
- 10 28 8 Collection (6 items, ready for display)
- 10 28 9 Wood Item, small
- 10 28 10 Recycled Art Item (item made recycled materials)

Class 29 – Children's Needlework (12 & under)

Premiums: 1st - \$3.00, 2nd - \$2.00, 3rd - \$1.00

- 10 29 1 Machine Sewing, Clothing
- 10 29 2 Crocheted Item
- 10 29 3 Knitted Item
- 10 29 4 Fleece Item
- 10 29 5 Pillow
- 10 29 6 Not Listed

Class 30 – Youth Needlework (13-18)

Premiums: 1st - \$3.00, 2nd - \$2.00, 3rd - \$1.00

- 10 30 1 Machine Sewing, Clothing
- 10 30 2 Crocheted Item
- 10 30 3 Knitted Item
- 10 30 4 Fleece Item
- 10 30 5 Pillow
- 10 30 6 Not Listed



Williams County Senior Fair Gillette & Still Exhibits - Book 11

Superintendent: Danyel Wortkoetter

Asst. Superintendent: Scott Carroll

BAKING CULINARY ARTS DIVISION

Committee Members
Chad Carroll & Susan Walker



BOOK 11 - BAKING & CULINARY ARTS

Rules:

1. All exhibitors will pay \$1.00 per entry.
2. All entries must be submitted by the last Friday in August. NO ENTRIES WILL BE ACCEPTED AFTER THE ENTRY DEADLINE.
3. All items shown must be the work of the exhibitor.
4. Exhibitors must bring a written list of exhibits as they appear in the premium lists, and no item will be examined by the Secretary.
5. DO NOT ask the Secretary to make entries of any item not listed, as they will not be considered by the Judge.
6. ONE ENTRY PER CATEGORY UNLESS OTHERWISE SPECIFIED.
7. This department will be judged by appointed Judges.
8. The arrangement of all exhibits must be left to the Superintendent and the Assistants. They will assign locations and their decisions will be final on all questions that may arise.
9. Any disrespectful conduct on the part of the Exhibitors should be reported to the Judge or Superintendent who may reject any or all items not properly made.
10. Any item shown and considered unworthy of first premium may be awarded second premium or none. No item will receive more than one premium.
11. There is no guarantee of the safety of exhibits, but all precautions possible will be taken to protect exhibits.
12. Premium cards have no value in receiving payment of premiums, as they are paid from Judges' books, which are final in all cases.
13. Items will be released on Friday following the fair from 4pm to 8 pm.
14. Anything left after 8pm Friday can be picked up at the office during office hours.

ALL CLASSES - No box or prepared mixes. Must submit recipe with item. One entry per category.

BAKED GOODS can be brought in on Thursday or Friday before the fair, but must be in place before 7:00 pm Friday. Judging of baked goods will be on Friday @ 8:00 pm. A piece will be kept for display of all pies, cakes and larger bread items. The remainder of these items only will be available for pickup by the exhibitor after judging on Saturday morning at 9:00 am. Two Best of Show awards will be selected by the judges. One will be selected from the Adult entries and one from the Children's entries.

Class 31 – Candy (6 pieces on a small plate)

Premiums: 1st - \$4.00, 2nd - \$3.00, 3rd - \$2.00

- 11 31 1 Chocolate Fudge
- 11 31 2 Truffles
- 11 31 3 Nut Brittle
- 11 31 4 Caramels
- 11 31 5 Peanut Butter Fudge
- 11 31 6 Buckeyes



Explore
Culinary Arts

BOOK 11 - BAKING & CULINARY ARTS (cont.)**Class 32 – Cakes & Pies**

Premiums: 1st - \$5.00, 2nd - \$4.00, 3rd - \$3.00

- 11 32 1 White Cake
- 11 32 2 Coffee Cake
- 11 32 3 Spice Cake
- 11 32 4 Angel Food Cake, no icing
- 11 32 5 Chocolate Cake
- 11 32 6 Pound Cake
- 11 32 7 Upside Down Cake
- 11 32 8 Cupcakes, any variety, frosted
- 11 32 9 Berry Pie, any variety
- 11 32 10 Apple Pie
- 11 32 11 Cherry Pie
- 11 32 12 Peach Pie
- 11 32 13 Pumpkin Pie
- 11 32 14 Custard Pie
- 11 32 15 Pecan Pie
- 11 32 16 Not Listed Cake
- 11 32 17 Not Listed Pie

Class 33 – Cookies & Breads

Premiums: 1st - \$4.00, 2nd - \$3.00, 3rd - \$2.00

- 11 33 1 Oatmeal Cookies (6)
- 11 33 2 Molasses Cookies (6)
- 11 33 3 Cut-Out Sugar Cookies (6)
- 11 33 4 Refrigerator Cookies (6)
- 11 33 5 Chocolate Chip Cookies (6)
- 11 33 6 Snickerdoodles (6)
- 11 33 7 Not Listed Cookies (6)
- 11 33 8 Brownies (6)
- 11 33 9 Muffins, any variety (6)
- 11 33 10 Quick Bread Loaf, any variety
- 11 33 11 Brown Bread
- 11 33 12 White Bread
- 11 33 13 Cinnamon Rolls (6)
- 11 33 14 Pan Rolls (6)
- 11 33 15 Not Listed Yeast Bread
- 11 33 16 Cake Doughnuts (6)
- 11 33 17 Yeast Doughnuts (6)

Class 34– Baking for Children (Ages 12 and under)

Premiums: 1st \$3.00, 2nd \$2.00, 3rd \$1.00

- 11 34 1 Peanut Butter Cookies (6)
- 11 34 2 Chocolate Chip Cookies (6)
- 11 34 3 Bar Cookies, any variety (6)
- 11 34 4 Muffins, any variety (6)
- 11 34 5 Decorated Cupcakes (6)

Class 35 – Decorated Cakes – Amateur

All cakes will be judged on decoration only. Styrofoam or other cake forms will be acceptable

- 11 35 1 Wedding Cake \$8.00, \$5.00, \$3.00
- 11 35 2 Birthday Cake \$5.00, \$4.00, \$3.00
- 11 35 3 Special Occasion \$5.00, \$4.00, \$3.00
- 11 35 4 Decorated Cupcakes 4.00, \$3.00, \$2.00

Class 36 – Bakers' Challenge Contest

Premiums: 1st - \$25.00, 2nd - \$15.00, 3rd - \$10.00

Rules:

1. Open to all ages
2. Must use recipe as printed, no substitutions.
3. Recipe will change yearly
4. Winners will be determined by appointed judge.
5. All General Rules for Baked Goods apply
6. Coloring of the filling or sprinkles are optional. Place 6 whoopie pies on a sturdy dish of your choice.

Recipe: Whoopie Pies

Cookies:

- 1 cup granulated sugar
- 1/2 cup butter, softened
- 1/2 cup buttermilk
- 2 tsp. vanilla
- 1 egg
- 2 oz. unsweetened baking chocolate, melted & cooled
- 1 3/4 cups all purpose flour
- 1/2 tsp. baking soda
- 1/2 tsp. salt

Filling:

- 3 cups powdered sugar
- 1 jar (7 oz.) marshmallow crème
- 3/4 cup butter, softened
- 6 to 7 tsp. milk

Heat oven to 400 degrees. Grease cookie sheet with shortening or cooking spray or line with parchment paper.

In a large bowl, beat granulated sugar, 1/2 cup butter, buttermilk, vanilla, egg, and chocolate with an electric mixer on medium speed or with spoon until well blended. Stir in flour, baking soda, and salt. Drop dough by rounded tablespoons on cookie sheets about 2 inches apart.

Bake 8 to 10 minutes or until almost no indentation remains when touched in center. Immediately remove from cookie sheets to cooling racks. Cool completely.

In a large bowl beat all filling ingredients on medium speed about 2 minutes or until light & fluffy. For each whoopie pie, spread scant 3 tablespoons filling on bottom of one cookie; top with second cookie, bottom side down.

Makes 18 whoopie pies.

GOOD LUCK EVERYONE

Williams County Senior Fair Gillette & Still Exhibits - Book 12

Superintendent: Danyel Wortkoetter
Asst. Superintendent: Scott Carroll
Committee: Chad Carroll

ANTIQUES & COLLECTIBLES DIVISION



BOOK 12 - ANTIQUES & COLLECTIBLES

The exhibit will be staged in the Gillette Cultural Arts Center. The show will be open to all counties. All exhibitors will pay \$1.00 per entry.

1. Exhibitors may submit 3 items per CLASS. Three years must pass before an item may be exhibited again.
2. Exhibitor must bring in or mail an entry form with a list of items to the fair office by the last Friday in August.
3. Exhibitor is responsible for placing items in proper class and category.
4. Exhibits will be accepted at the Gillette Building on Thursday, September 8th from 10:00 am until 4:30 pm.
5. The exhibitor or their agents must present all exhibits in person. Be sure all entry tags are firmly attached to items
6. All items should be clean and in a good state of preservation. Condition and rarity are of prime importance and will be considered in the judging. The judge may place an entry less than first place if the entries in the class are not worthy of a higher place.
7. If the item is unusual, a small typed or neatly printed information card would be appreciated.
8. The Williams County Agricultural Society is not responsible for damage, breakage, or theft.
9. Judging will be Thursday, Sept. 8, 2022 at 5:00 pm.
10. Judge's decision is final.
11. Premiums will be paid from judge's records only and not from ribbons which may be attached to the exhibits. Premiums will be mailed the first business day after the annual fair. No names will be printed in the newspapers.

Premiums: 1st-\$4.00 2nd-\$3.00 3rd-\$2.00
Best Of Show: Plaque, Rosette Ribbon
People's Choice Award

Class 1: China

1. Creamer & Sugar Set
2. Serving Bowl
3. Covered Vegetable Dish
4. Toothpick Holder
5. Cup & Saucer
6. Occupied Japan

Class 2: Glass

1. Depression Glass
2. Carnival
3. Salt & Pepper Set
4. Toothpick Holder
5. Paper Weight
6. Candle Holder

Class 3: Pottery

1. Hull
2. Weller
3. Roseville
4. Jug
5. McCoy
6. Any Other

Class 4: Fishing

1. Lures
2. Reels
3. Fishing License
4. Bait Bucket
5. Landing Net
6. Any Other

Class 5: Toys & Games Pre 1970

1. Toy Tractor
2. Comic Book
3. Wind Up Toy
4. Box Game
5. Metal Dishes
6. Any Other

Class 6: Stryker, OH.

1. Post Card
2. Manufacturing
3. Merchants
4. Advertising
5. Any Other

Class 7: Collections (Min 2—Max 5)

1. Marbles
2. Thimbles
3. Pens \ Pencils
4. License Plates
5. Any Others

Class 8: Barn Yard

1. Feed Sacks
2. Wooden Hay Pulley
3. Chicken Water Container
4. Hay Hooks
5. Any Other

Class 9: Smoke Shop

1. Ash Tray
2. Pipe Holder w/ Pipe
3. Match Holder
4. Cigar Holder
5. Cigarette Case
6. Any Other

Class 10: Barber Shop

1. Shaving Mug w/ Brush
2. Razor Strap
3. Cologne Bottle
4. Straight Razor
5. Any Other

Class 11: Country Kitchen

1. Cookie Jar
2. Cooking Utensil, Enamel
3. Juicer
4. Coffee Pot
5. Rolling Pin
6. Measuring Cup

Class 12: Christmas

1. Snow Globe
2. String Lights
3. Santa
4. Christmas Book
5. Ornament
6. Christmas Post Card

Class 13: School Days

1. Class Picture
2. Ink Well
3. Diploma
4. Chalk \ Slate Board
5. Award \ Paper
6. Pin

Class 14: Ladies Wear

1. Ladies Dress Gloves
2. Hat Pins
3. Beaded or Mess Purses
4. Ladies Hat
5. Necklace
6. Lapel Watch

Class 15: Jewelry

1. Brooch
2. Bracelet
3. Necklace & Earring Set
4. Cuff Links
5. Pocket Watch



Williams County Senior Fair Gillette & Still Exhibits - Book 15

Superintendent: Danyel Wortkoetter
Asst. Superintendent: Scott Carroll
Committee: Chad Carroll

PHOTOGRAPHY DIVISION

Premiums:
1st -\$4.50 2nd -\$3.50 3rd-\$2.50
Ribbons for 1st, 2nd and 3rd place
Best Of Show: Rosette Ribbon



BOOK 15 - PHOTOTGRAPHY

Rules:

1. Entry forms must be submitted by the last Friday in August, to receive your entry tags. All exhibitors must pay \$1.00 per entry.
2. Exhibits must be brought into the Gillette Building on the fairgrounds on Thursday, Sept. 8, from 12 p.m. – 8:30 p.m.
3. Judging will be conducted on Friday, Sept. 9. All results will be posted by Saturday, Sept. 10.
4. Exhibits can be picked up between 4pm and 8pm Friday, September 16th. Any exhibit removed before this time will forfeit premium.
5. An exhibitor may enter two photos per sub class, but photos can only be exhibited once and many not be exhibited again at the fair.
6. No photo will be exhibited with photographer's signature or logo on the face of the photo.
7. Exhibit is open to amateur photographers only. An individual who receives money for their work or who makes a living with photography is NOT eligible to exhibit, nor is their work eligible for exhibit by others.
8. The Committee reserves the right to determine whether an article is worthy of exhibition. (No Nudes)
9. Single photos must be 8x10 and mounted neatly and securely on mounting board not to exceed 12x14. A border of 2 inches per side is recommended for all photographs. No photographs will be displayed in frames of any kind. Photos will be secured to walls with use of clips. Please don't put any kind of hanger on your photos. The Fair Board Department Superintendent will do this.
10. Name and address must be placed on back of each entry.
11. All different types of photos, be it colored, black and white, or digital prints will be entered not by the type but by what the photo is of.
12. Age divisions are: Youth 8-12 Years of Age; Junior 13-18 Years of age; and Senior 19 Years of age and older.
13. Premiums will be given from the awards marked in the judge's records and not from stickers that may be attached to the exhibit. Premiums will be mailed the first business day after the annual fair.
14. Judges decision is final Premiums will be paid per class.
15. Bring exhibitor tags with the photos at time of entry and Superintendent will attach tag.
16. Williams County Agricultural Society is not responsible for loss or damage of entries.
17. Premiums will be mailed following the annual fair.
18. The Williams County Agriculture Society is not responsible for photo's entered as an exhibit without consent of the individual pictured as that may apply. Exhibitors bear the sole responsibility for the pictures they enter.

BOOK 15 - PHOTOGRAPHY (cont.)*Enter by using Book-Class-Lot-Description***Youth Class 1: Film Color**

- 15 1 1 Animal(s)
- 15 1 2 Scenery
- 15 1 3 People
- 15 1 4 Architecture
- 15 1 5 Seasonal
- 15 1 6 Sports & Recreation
- 15 1 7 Extreme Close Up
- 15 1 8 Special Effects
- 15 1 9 Night Scenes

Youth Class 2: Film Black & White

- 15 2 1 Animal(s)
- 15 2 2 Scenery
- 15 2 3 People
- 15 2 4 Architecture
- 15 2 5 Seasonal
- 15 2 6 Sports & Recreation
- 15 2 7 Extreme Close Up
- 15 2 8 Special Effects
- 15 2 9 Night Scenes

Youth Class 3: Digital Color

- 15 3 1 Animal(s)
- 15 3 2 Scenery
- 15 3 3 People
- 15 3 4 Architecture
- 15 3 5 Seasonal
- 15 3 6 Sports & Recreation
- 15 3 7 Extreme Close Up
- 15 3 8 Special Effects
- 15 3 9 Night Scenes

Youth Class 4: Digital Black & White

- 15 4 1 Animal(s)
- 15 4 2 Scenery
- 15 4 3 People
- 15 4 4 Architecture
- 15 4 5 Seasonal
- 15 4 6 Sports & Recreation
- 15 4 7 Extreme Close Up
- 15 4 8 Special Effects
- 15 4 9 Night Scenes

Junior Class 5: Film Color

- 15 5 1 Animal(s)
- 15 5 2 Scenery
- 15 5 3 People
- 15 5 4 Architecture
- 15 5 5 Seasonal
- 15 5 6 Sports & Recreation
- 15 5 7 Extreme Close Up
- 15 5 8 Special Effects
- 15 5 9 Night Scenes

Junior Class 6: Film Black & White

- 15 6 1 Animal(s)
- 15 6 2 Scenery
- 15 6 3 People
- 15 6 4 Architecture
- 15 6 5 Seasonal
- 15 6 6 Sports & Recreation
- 15 6 7 Extreme Close Up
- 15 6 8 Special Effects
- 15 6 9 Night Scenes

Junior Class 7: Digital Color

- 15 7 1 Animal(s)
- 15 7 2 Scenery
- 15 7 3 People
- 15 7 4 Architecture
- 15 7 5 Seasonal
- 15 7 6 Sports & Recreation
- 15 7 7 Extreme Close Up
- 15 7 8 Special Effects
- 15 7 9 Night Scenes

Junior Class 8: Digital Black and White

- 15 8 1 Animal(s)
- 15 8 2 Scenery
- 15 8 3 People
- 15 8 4 Architecture
- 15 8 5 Seasonal
- 15 8 6 Sports & Recreation
- 15 8 7 Extreme Close Up
- 15 8 8 Special Effects
- 15 8 9 Night Scenes

Senior Class 9: Film Color

- 15 9 1 Animal(s)
- 15 9 2 Scenery
- 15 9 3 People
- 15 9 4 Architecture
- 15 9 5 Seasonal
- 15 9 6 Sports & Recreation
- 15 9 7 Extreme Close Up
- 15 9 8 Special Effects
- 15 9 9 Night Scenes

Senior Class 10: Film Black & White

- 15 10 1 Animal(s)
- 15 10 2 Scenery
- 15 10 3 People
- 15 10 4 Architecture
- 15 10 5 Seasonal
- 15 10 6 Sports & Recreation
- 15 10 7 Extreme Close Up
- 15 10 8 Special Effects
- 15 10 9 Night Scenes

Senior Class 11: Digital Color

- 15 11 1 Animal(s)
- 15 11 2 Scenery
- 15 11 3 People
- 15 11 4 Architecture
- 15 11 5 Seasonal
- 15 11 6 Sports & Recreation
- 15 11 7 Extreme Close Up
- 15 11 8 Special Effects
- 15 11 9 Night Scenes

Senior Class 12: Digital Black & White

- 15 12 1 Animal(s)
- 15 12 2 Scenery
- 15 12 3 People
- 15 12 4 Architecture
- 15 12 5 Seasonal
- 15 12 6 Sports & Recreation
- 15 12 7 Extreme Close Up
- 15 12 8 Special Effects
- 15 12 9 Night Scenes

Open Photography Class 13: Fair History

This class is open display of any pictures related to history of the Williams Co. Fair. *special class*

- 15 13 1 Fair History - Youth - any picture
- 15 13 2 Fair History - Junior - any picture
- 15 13 3 Fair History - Senior - any picture

Williams County Senior Fair Gillette & Still Exhibits - Book 16

Superintendent: Danyel Wortkoetter
Asst. Superintendent: Scott Carroll
Committee: Chad Carroll

ARTS DIVISION

Premiums:
1st -\$3.00; 2nd-\$2.00; 3rd-\$1.00,
Ribbon for 1st, 2nd and 3rd place
Best Of Show \$5.00



BOOK 16 - ARTS

Rules:

1. Exhibits must be brought into the Gillette Building on the Fairgrounds on Sept. 8th from 12 p.m. - 8:30 p.m. Contact the Superintendent if you cannot make this date.
 2. Entry forms need to be submitted to the fair office by the last Friday in August to receive your entry tags. All exhibitors will pay \$1.00 per entry
 3. Judging to be Friday, Sept. 9th. All results will be posted by Saturday 10th.
 4. Removal of exhibits will be 4pm to 8pm Friday Sept. 16th. Any exhibits removed before this time will be forfeit premiums.
 5. All artwork must be matted and in frames equipped with wire for hanging.
 6. An exhibitor may enter no more than two entries per class, but will only receive one premium per class.
 7. The Committee reserves the right to determine whether an article is worthy of exhibition (no nudes).
 8. Name, address and date of work must be on back of entry.
 9. Judges decision is final.
 10. Best of Show will receive a rosette ribbon.
 11. Williams County Agricultural Society is not responsible for loss or damage of entries.
 12. Exhibits can be picked up Friday, Sept. 16th between 4pm - 8pm. Premiums will be mailed the first business day after the annual fair.
- Divisions for all classes as follows: Youth (up to 12 yrs.), Junior (13-19 yrs.) Seniors (20 and up yrs.)

Youth Division

Class 1: General Art

- 16 1 1 Chalk
- 16 1 2 Charcoal
- 16 1 3 Pencil work
- 16 1 4 Pen & Ink Sketch
- 16 1 5 Crayon
- 16 1 6 Paint by number

Junior Division

Class 2: General Art

- 16 2 1 Charcoal
- 16 2 2 Pencil work
- 16 2 3 Pen & Ink Sketch
- 16 2 4 Water color
- 16 2 5 Oil painting
- 16 2 6 Acrylic painting

Senior Division

Class 3: General Art

- 16 3 1 Chalk
- 16 3 2 Charcoal
- 16 3 3 Pencil work
- 16 3 4 Pen & Ink Sketch

Class 4: Water Color Painting

- 16 4 1 Landscape
 - 16 4 2 Flower or Fruit
 - 16 4 3 Figure
 - 16 4 4 Animal(s)
 - 16 4 5 Still Life
 - 16 4 6 Building
 - 16 4 7 Abstract or Modern
- ##### Class 5: Oil Painting
- 16 5 1 Landscape
 - 16 5 2 Flower(s) or Fruit
 - 16 5 3 Seascape
 - 16 5 4 Portrait
 - 16 5 5 Building
 - 16 5 6 Abstract or Modern
 - 16 5 7 Bird(s)
 - 16 5 8 Animal(s)
 - 16 5 9 Still Life
 - 16 5 10 Scenery

Class 6: Oil Painting

- 16 6 1 Landscape
- 16 6 2 Flower(s) or Fruit
- 16 6 3 Seascape
- 16 6 4 Portrait
- 16 6 5 Building
- 16 6 6 Abstract or Modern
- 16 6 7 Bird(s)
- 16 6 8 Animal(s)
- 16 6 9 Still Life
- 16 6 10 Scenery

Class 7: Porcelain - Commercial Blanks

- 16 6 1 Bells and Boxes
- 16 6 2 Tea Sets
- 16 6 3 Vases
- 16 6 4 Plates
- 16 6 5 Banks
- 16 6 6 Specimen not listed

Professional Division

Class 8: Watercolor Paintings

- 16 8 1 Landscape
- 16 8 2 Flower(s) or Fruit
- 16 8 3 Seascape
- 16 8 4 Portrait
- 16 8 5 Building
- 16 8 6 Abstract or Modern
- 16 8 7 Bird(s)
- 16 8 8 Animal(s)
- 16 8 9 Still Life
- 16 8 10 Scenery

Class 9: Oil Paintings

- 16 9 1 Landscape
- 16 9 2 Flower(s) or Fruit
- 16 9 3 Seascape
- 16 9 4 Portrait
- 16 9 5 Building
- 16 9 6 Abstract or Modern
- 16 9 7 Bird(s)
- 16 9 8 Animal(s)
- 16 9 9 Still Life
- 16 9 10 Scenery

Class 10: Acrylic

- 16 10 1 Landscape
- 16 10 2 Flower(s) or Fruit
- 16 10 3 Seascape
- 16 10 4 Portrait
- 16 10 5 Building
- 16 10 6 Abstract or Modern
- 16 10 7 Bird(s)
- 16 10 8 Animal(s)
- 16 10 9 Still Life
- 16 10 10 Scenery

Class 11: Porcelain - Commercial Blanks

- 16 11 1 Bells and Boxes
- 16 11 2 Tea Sets
- 16 11 3 Vases
- 16 11 4 Plates
- 16 11 5 Banks
- 16 11 6 Specimen not listed



Book 16—Arts—Continued

Class 12: Any Media

16 12 1 Flowers

16 12 2 Animals(s)

16 12 3 Scenery

Class 13: Painted Object

Object not to exceed weight of 10
lbs. and size limited to a max of
24"x24"x24".

16 13 1 Acrylic painted

16 13 2 Oil painted

Williams County Junior Fair - FFA - Farm Shop & Farm Products

Superintendent
Danyel Wortkoetter

**Farm Products
Farm Shop
Judging
Sat - Sept. 10th
Gillette Building**

Asst.
Superintendent
Scott Carroll



**All FFA Division Premiums:
A-\$3.50, B-\$3.00, C-\$2.50**

FFA **Still Projects**

FARM PRODUCTS DIVISION

All non-crop projects must be in place in the Gillette Building by Friday, September 9th, 2022 at 8:00 p.m. Crop projects must be in place by Saturday, September 10th at 10:00 a.m. Projects will be released on Friday Sept. 16 from 4pm to 8pm.

Judging:

Saturday, September 10th at 4:00 p.m.

Rules:

1. All exhibits must be grown in the current year and part of the FFA members' project.
2. Entries are limited to one in each class per exhibitor. All entries must be submitted by June 1st of current year to OSU Extension Office.
3. No more than four premiums paid per division.
4. Variety of seed must be given when entry is made.
5. There will be a class champion if three (3) or more entries are exhibited.
6. Exhibitors must furnish their own glass jar for the field crop class. Field crops include wheat, oats, barley, rye, spelts, alfalfa, mammoth clover, red clover, sweet clover and timothy.
7. Garden vegetables include sweet corn (6 ears), potatoes, tomatoes, peppers, etc. Vegetables other than sweet corn should be exhibited on a paper plate in a grouping of 4-6.

Department/Section/Class

JR FFA 900 Field Corn (6 ears)
JR FFA 901 Soybeans (3 stalks w/ roots)
JR FFA 902 Hay (4-6 inch slice)
JR FFA 903 Field Crop (1 pint)
JR FFA 904 Garden Vegetables

FFA

FARM SHOP DIVISION

All non-crop projects must be in place in the Gillette Building by Thursday, September 8th at 8:00 p.m. Crop projects must be in place by Saturday, September 10th at 10:00 a.m. Projects will be released on Friday Sept. 16 from 4pm to 8pm..

Judging:

Saturday, September 10th at 4:00 p.m.

Rules:

1. Entries are limited to 2 different entries per class. All entries must be submitted by June 1st of current year to the OSU Extension Office.
2. Exhibits must be part of exhibitor's Ag Ed instructional program from previous year and must be made in the school lab.
3. A poster with at least two photographs of the project can be exhibited in place of actual projects that are too large or unable to be exhibited.
4. There will be a class champion if three (3) or more entries are exhibited.

Department/Section/Class

JR FFA 920 Small Wood Projects
JR FFA 921 Small Metal Projects
JR FFA 922 Medium & Large Wood Projects
JR FFA 923 Medium & Large Metal Projects
JR FFA 924 Non-Ag Indoor Projects
JR FFA 925 Non-Ag Outdoor Projects
JR FFA 926 Poster- Current Ag Studies/SAE
JR FFA 927 Ag Science Research (tri-fold)



Exhibitor Name:	Register's #
------------------------	---------------------

Address:

City: _____ State: _____ Zip: _____

Email: _____ **Phone:** _____

Complete the form and submit to the office during regular hours or mail to the address above. Entries are due no later than the last Friday in August 2022. No entries will be accepted after the listed due date. Thank you for your entry and support!

Exhibitors **MUST** pay any gate fee. Exhibiting **DOES NOT** give you rights to free gates.



NEW IN 2022

!!!WRIST BANDS ARE \$25 FOR ALL DAY!!!

!!!KID'S DAY SPECIAL - \$17 FOR ALL DAY!!!